

## TOUR INSTRUCTIONS

Welcome to the OCTA tours of the Truckee Donner Route, Gold Country, Roller Pass and the Johnson Rancho. Your guides are trained on the route, having spent hours of time in the area and in personal study to be qualified to conduct an interesting and informative tour. Weather is beyond their control but they will make suggestions as you proceed through the day to keep you as comfortable as possible. The following guidelines will contribute to your enjoyment of the tours while enroute or off the bus.

1. Please observe the NO SMOKING rule on the bus.
2. The narrator guides will appreciate your COURTEOUS ATTENTION when they are explaining the historical aspects of the tour or answering questions. Bus PA system may not provide equal sound quality throughout the bus so you will need to be attentive at the time information is given.
3. EXITING the bus is less confusing if you follow the guides' instruction. We believe alternating sides is fair and that the fastest way to exit the bus is to "follow the leader out" from the front to the rear with the rear following in order until the bus is emptied. Some refer to this as the "military exit"!
4. Tour guides will give you TIME ALLOWANCE for each stop. We encourage your prompt return to maintain the schedule. (Usually the bus driver will "honk" the horn to alert you.) Please reserve some of your questions (written, too!) until the bus is moving. This will enable the guides to give information to all members.
5. You are encouraged to use the RESTROOM ON THE BUS. On the Truckee Donner and Gold Country tours there are two morning and one afternoon stops with adequate restroom facilities. Some of these will be pit or portable toilets. Johnson Ranch tour members will be more dependent on the bus restroom. Roller Pass hikers will receive information on the trail.
6. A CONTINENTAL BREAKFAST and a BOX LUNCH with beverages are provided on the Truckee/Donner, Gold Country and Roller Pass tours. Water will be on the bus.
7. LUNCH STOPS will occur between 11:30 and 1:00 due to the staggered bus schedules. Tour guides will keep you informed of the time and possible lunch stops as the tour proceeds.
8. TOUR GUIDES will occupy the double seat behind the driver and on some buses, the double seat behind the bus door. Guides will be identified by a yellow baseball cap and/or a badge that says "Tour Guide". Your guide may ask for volunteers' assistance with chores during the tour. Feel free to help as there are no "designated" helpers.
9. DRIVERS will either LOCK the bus or REMAIN with the bus at stops. You may leave possessions in your seat or in the overhead space.
10. Tour guides will remind you to remove all personal effects when you exit the bus at the Radisson Hotel.  
Thursday and Saturday tours will have different guides & drivers.

Mary Mueller-Transportation Chairwoman

## TRUCKEE DONNER TOUR

Buses will be ready for boarding and loading breakfast and lunch supplies 15 minutes before departure time. We have other buses due to arrive at your departure time so be sure to have everything you may need: extra water, camera, film, medications, light jacket, etc., so your bus can leave on time.

Depart Radisson via Hwy 160 East to US Hwy 80 East.

Breakfast stop at Gold Run Rest Area. On arrival, please allow the helpers to exit the bus first to set up for breakfast distribution. 20 MINUTE stop for breakfast and clean-up.

Continuing on US 80 East, take the Eagle Lake Road off ramp, to view a Trails West marker and a section of the emigrant trail from the bus. In .4 mi. the bus will stop to let off passengers for a short, strolling walk on a section of the Emigrant Trail, the Old Dutch Flat Road and the Lincoln Highway. This is easy walking with plenty of time (20 MINUTES) and the bus will pick you up at the end of your walk. Closed toe shoes are advised for any of the tours.

Continuing on Hwy US 80 East take the Cisco Grove off-ramp and remain on old Hwy 40 to Donner State Park.

Crossover Hwy 80 toward Soda Springs.

Bus will stop beyond the Sugar Bowl Ski resort garage where you may exit the bus. Take your cameras and stay close to the guide while points of interest are identified, diary excerpts read and questions answered. Short TEN MINUTE stop.

Continue toward Donner Lake pulling over for a brief stop to view Donner Lake and the Chinese wall. Pictures will have to be taken through the windows. Continue downgrade.

View the west end of Donner Lake while continuing toward Donner Memorial State Park, still on old Hwy 40. By-pass Donner Park and exit onto Hwy 80 East toward Truckee. Leave Hwy 80 at off-ramp Hwy 89 North. This will take you past the site of the George Donner Camp. About one half mile farther the bus will turn off to Prosser Recreation Site. You will travel approx. 2 miles on pavement to where you will have lunch.

On arrival, please allow the helpers to exit the bus first to set up for the lunch distribution. 25 MINUTE stop for lunch and clean-up. There are the usual porta-potties at this site and unfortunately, not where you want them. You will have to walk approx. .2 mi. from the picnic site. Please avail yourself of the bus facilities. Just pretend you are in an airplane!!

Depart from Prosser Creek Site, return to Hwy 89 and enter the George & Jacob Donner Camp Site. The bus will drop all passengers and try to park. He may have to go out and return to pick up so PLEASE be aware of the time. You will have 30 MINUTES with 4 or 5 archaeologists to guide you around the site. We have had confirmation from Dick Markley, National Forest Service, Tahoe National Forest, Dr. Donald Hardesty, Gail Kromydas. Perhaps Susan Lindstrom & Carry Smith, Archaeologists, will join us for one of the tour days.



This will be an exciting walk with participants of the "dig". There are unisex pit toilets here.

Depart from Donner Camp Site via Hwy 89 to Hwy 80 West. After the Ag Inspection station you will exit from Hwy 80 and go back on Old Hwy 40 to the entrance to the Donner Memorial State Park.

Side trip to China Cove to view the three passes. Quick 5 MINUTE stop.

At the Park you will have a ONE HOUR stop to see the slide show on the half-hour, museum exhibits, the historic walk to the cabin site, a nature trail walk and living history exhibit by OCTA members. You might also want to use the rest rooms. NOTE: Slide show is 25 minutes, seats 60 people. Your OCTA name badge is your ticket into the museum.

Return to Hwy 80 West then a short climb to the Donner View Vista Point. Here you will see the Passes from a different angle and a good view of the snowsheds and beautiful Donner Lake. A quick 5 MINUTE picture stop.

Continuing on Hwy 80 West, you will have a 20 minute ride while your guides may catch a few winks and you can rest your eyes. Then it is time for the last stop of the tour, Emigrant Gap.

At Emigrant Gap, gather close around your guide and look way down into Bear Valley and hear the story of how those incredible people took their wagons up and down these mountains.

If you think you have a boring trip home - you'd better think again!

TOUR A, TRUCKEE DONNER - THU AUG 15 - BUS 1 Blue, Depart 7:00

GUIDES - Tom Hunt, Gene & Eisel Brantley

Bauer, Judy - Fournoy CA  
Beach, Jim - Williamsville NY  
Blair, Roger - Spokane WA  
Blair, Andrea -

Budde, Jim - Grandview MO  
Budde, Judy -  
Carey, Neoma - Norwalk CA  
Chadey, Henry - Rock Springs WY  
Chadey, Helen -

Chamberlain, Judy - Fournoy CA  
Dart, Doris - Anderson CA  
Davis, Virginia - San Francisco CA  
Dieterich, Robert - Fair Oaks CA  
Dieterich, Adrienne

Dragoo, Sandy - Greenfield IN  
Eilertsen, Dick - Seattle WA  
Eberhardt, Elmer - Eureka CA  
Eberhardt, Betty -

Edens, Walter - Laramie WY  
Edens, June  
Edwards, George - Midland TX  
Edwards, Marj -

Fairfield, Joe - Bridgeport Neb  
Fairfield, Lois -  
Garrison, Dwight - Portland OR  
Garison, Myrthine -  
Greenland, Billie - Fort Hueneme CA

Lyon, Debbie - San Jose CA  
Lyon, Mike -  
Lund, Ron - Casper WY  
Marshall, Ross - Merriam KS  
Marshall, Jana -  
Miller, Jeanne - Independence MO

Pruden, Tammy - Eureka CA  
Rea, Ray - Oregon City, OR  
Rea, Marijane -  
Ripley, Bob - Wichita KS  
Shattuck, Bob - Grass Valley CA

Spedden, Rush - Salt Lake City UT  
Taplin, Frances - Eureka CA  
Underbrink, Lee - Casper WY  
Wagonner, Sandy - Greenfield IN  
Washington, Bette - Seattle WA

## TRUCKEE DONNER TOUR

Buses will be ready for boarding and loading breakfast and lunch supplies 15 minutes before departure time. We have other buses due to arrive at your departure time so be sure to have everything you may need: extra water, camera, film, medications, light jacket, etc., so your bus can leave on time.

Depart Radisson via Hwy 160 East to US Hwy 80 East.

Breakfast stop at Gold Run Rest Area. On arrival, please allow the helpers to exit the bus first to set up for breakfast distribution. 20 MINUTE stop for breakfast and clean-up.

Continuing on US 80 East, take the Eagle Lake Road off ramp, to view a Trails West marker and a section of the emigrant trail from the bus. In .4 mi. the bus will stop to let off passengers for a short, strolling walk on a section of the Emigrant Trail, the Old Dutch Flat Road and the Lincoln Highway. This is easy walking with plenty of time (20 MINUTES) and the bus will pick you up at the end of your walk. Closed toe shoes are advised for any of the tours.

Continuing on Hwy US 80 East take the Cisco Grove off-ramp and remain on old Hwy 40 to Donner State Park.

Crossover Hwy 80 toward Soda Springs.

Bus will stop beyond the Sugar Bowl Ski resort garage where you may exit the bus. Take your cameras and stay close to the guide while points of interest are identified, diary excerpts read and questions answered. Short TEN MINUTE stop.

Continue toward Donner Lake pulling over for a brief stop to view Donner Lake and the Chinese wall. Pictures will have to be taken through the windows. Continue downgrade.

View the west end of Donner Lake while continuing toward Donner Memorial State Park, still on old Hwy 40. By-pass Donner Park and exit onto Hwy 80 East toward Truckee. Leave Hwy 80 at off-ramp Hwy 89 North. This will take you past the site of the George Donner Camp. About one half mile farther the bus will turn off to Prosser Recreation Site. You will travel approx. 2 miles on pavement to where you will have lunch.

On arrival, please allow the helpers to exit the bus first to set up for the lunch distribution. 25 MINUTE stop for lunch and clean-up. There are the usual porta-potties at this site and unfortunately, not where you want them. You will have to walk approx. .2 mi. from the picnic site. Please avail yourself of the bus facilities. Just pretend you are in an airplane!!

Depart from Prosser Creek Site, return to Hwy 89 and enter the George & Jacob Donner Camp Site. The bus will drop all passengers and try to park. He may have to go out and return to pick up so PLEASE be aware of the time. You will have 30 MINUTES with 4 or 5 archaeologists to guide you around the site. We have had confirmation from Dick Markley, National Forest Service, Tahoe National Forest, Dr. Donald Hardesty, Gail Kromydas. Perhaps Susan Lindstrom & Carry Smith, Archaeologists, will join us for one of the tour days.



This will be an exciting walk with participants of the "dig". There are unisex pit toilets here.

Depart from Donner Camp Site via Hwy 89 to Hwy 80 West. After the Ag Inspection station you will exit from Hwy 80 and go back on Old Hwy 40 to the entrance to the Donner Memorial State Park.

Side trip to China Cove to view the three passes. Quick 5 MINUTE stop.

At the Park you will have a ONE HOUR stop to see the slide show on the half-hour, museum exhibits, the historic walk to the cabin site, a nature trail walk and living history exhibit by OCTA members. You might also want to use the rest rooms. NOTE: Slide show is 25 minutes, seats 60 people. Your OCTA name badge is your ticket into the museum.

Return to Hwy 80 West then a short climb to the Donner View Vista Point. Here you will see the Passes from a different angle and a good view of the snowsheds and beautiful Donner Lake. A quick 5 MINUTE picture stop.

Continuing on Hwy 80 West, you will have a 20 minute ride while your guides may catch a few winks and you can rest your eyes. Then it is time for the last stop of the tour, Emigrant Gap.

At Emigrant Gap, gather close around your guide and look way down into Bear Valley and hear the story of how those incredible people took their wagons up and down these mountains.

If you think you have a boring trip home - you'd better think again!

TOUR A, TRUCKEE DONNER - THU AUG 15 - BUS 2, Green, Departs 7:30

GUIDES - Bill & Shann Rupp, Frank & Pat Perry

Aisaka, Yugi - Kyoto, Japan  
Anderson, Ruth - New Ulm MN

Bigler, Dave - Sandy UT  
Blecha, Arvid - Denver CO  
Blecha, Anita -  
Brannian, Rochelle - Iowa City, IA  
Brannian, Terry

Cahill, James - Coronado CA  
Campbell, Delna - Verd NV  
Carlson, Gail -  
Crary, Doug - Modesto CA

Georges, Ed - Folsom CA  
Georges, Debby -  
Gobin, Lois - Paradise CA  
Goslovich, Georgette - Santa Rosa CA  
Goslovich, Pauline -

Grant, Wilbur - Modesto CA  
King, Joe - CA  
Merrill, Irving - Burlingame CA  
Merrill, Virginia  
Mitchell, Larry - Santa Rosa CA

Mulder, Al - Murray UT  
Mulder, Laura - Murray UT  
Mundie, Jim - Houston TX  
Mundie, Sara -  
Peyton, Cary - Turlock CA  
Puckett, Elmer - Elizabethtown KY  
Puckett, Leigh -

Scearce, Terrell - Modesto CA  
Stelling, Morton - Lincoln NEB  
Stelling, Marlene -

Tea, Roy - Salt Lake City UT  
Templeman, Bob - Redding CA  
Templeman, Althea -  
Thornton, Ralph - Burley ID  
Thornton, Janece -

Tompkins, Jim - Beavercreek OR  
Trende, Fred - Rosholt SD  
Trende, Dalene -  
Trickey, Jim - Clearwater FL  
Trickey, Pat -

## TRUCKEE DONNER TOUR

Buses will be ready for boarding and loading breakfast and lunch supplies 15 minutes before departure time. We have other buses due to arrive at your departure time so be sure to have everything you may need: extra water, camera, film, medications, light jacket, etc., so your bus can leave on time.

Depart Radisson via Hwy 160 East to US Hwy 80 East.

Breakfast stop at Gold Run Rest Area. On arrival, please allow the helpers to exit the bus first to set up for breakfast distribution. 20 MINUTE stop for breakfast and clean-up.

Continuing on US 80 East, take the Eagle Lake Road off ramp, to view a Trails West marker and a section of the emigrant trail from the bus. In .4 mi. the bus will stop to let off passengers for a short, strolling walk on a section of the Emigrant Trail, the Old Dutch Flat Road and the Lincoln Highway. This is easy walking with plenty of time (20 MINUTES) and the bus will pick you up at the end of your walk. Closed toe shoes are advised for any of the tours.

Continuing on Hwy US 80 East take the Cisco Grove off-ramp and remain on old Hwy 40 to Donner State Park.

Crossover Hwy 80 toward Soda Springs.

Bus will stop beyond the Sugar Bowl Ski resort garage where you may exit the bus. Take your cameras and stay close to the guide while points of interest are identified, diary excerpts read and questions answered. Short TEN MINUTE stop.

Continue toward Donner Lake pulling over for a brief stop to view Donner Lake and the Chinese wall. Pictures will have to be taken through the windows. Continue downgrade.

View the west end of Donner Lake while continuing toward Donner Memorial State Park, still on old Hwy 40. By-pass Donner Park and exit onto Hwy 80 East toward Truckee. Leave Hwy 80 at off-ramp Hwy 89 North. This will take you past the site of the George Donner Camp. About one half mile farther the bus will turn off to Prosser Recreation Site. You will travel approx. 2 miles on pavement to where you will have lunch.

On arrival, please allow the helpers to exit the bus first to set up for the lunch distribution. 25 MINUTE stop for lunch and clean-up. There are the usual porta-potties at this site and unfortunately, not where you want them. You will have to walk approx. .2 mi. from the picnic site. Please avail yourself of the bus facilities. Just pretend you are in an airplane!!

Depart from Prosser Creek Site, return to Hwy 89 and enter the George & Jacob Donner Camp Site. The bus will drop all passengers and try to park. He may have to go out and return to pick up so PLEASE be aware of the time. You will have 30 MINUTES with 4 or 5 archaeologists to guide you around the site. We have had confirmation from Dick Markley, National Forest Service, Tahoe National Forest, Dr. Donald Hardesty, Gail Kromydas. Perhaps Susan Lindstrom & Carry Smith, Archaeologists, will join us for one of the tour days.



This will be an exciting walk with participants of the "dig". There are unisex pit toilets here.

Depart from Donner Camp Site via Hwy 89 to Hwy 80 West. After the Ag Inspection station you will exit from Hwy 80 and go back on Old Hwy 40 to the entrance to the Donner Memorial State Park.

Side trip to China Cove to view the three passes. Quick 5 MINUTE stop.

At the Park you will have a ONE HOUR stop to see the slide show on the half-hour, museum exhibits, the historic walk to the cabin site, a nature trail walk and living history exhibit by OCTA members. You might also want to use the rest rooms. NOTE: Slide show is 25 minutes, seats 60 people. Your OCTA name badge is your ticket into the museum.

Return to Hwy 80 West then a short climb to the Donner View Vista Point. Here you will see the Passes from a different angle and a good view of the snowsheds and beautiful Donner Lake. A quick 5 MINUTE picture stop.

Continuing on Hwy 80 West, you will have a 20 minute ride while your guides may catch a few winks and you can rest your eyes. Then it is time for the last stop of the tour, Emigrant Gap.

At Emigrant Gap, gather close around your guide and look way down into Bear Valley and hear the story of how those incredible people took their wagons up and down these mountains.

If you think you have a boring trip home - you'd better think again!

**TOUR A, TRUCKEE DONNER - Sat Aug 17, Bus 1, Blue Bus, Departs 7:00 AM**

GUIDES - Roy & Louise Lattimore, Ormie Lamson

Ades, Lisa - New York  
Blackstone, Herbert - Bridgeport Neb  
Bullard, Bill - Independence MO  
Bullard, Donna -  
Burns, Rick - New York

Downs, Ron - St Louis MO  
Dyer, Otis - Rehoboth MASS  
Dyer, Jean -  
Fowler, Eric - Independence MO  
Fowler, Pauline -

Haines, Aubrey - Tucson AZ  
Haines, Wilma -  
Hayes, Pete - Sacramento CA  
Kabler, Bea Parks - Madison WI  
Koss, Sharon - Seattle WA

Larimore, Juanita - Calistoga CA  
Mattes, Merrill - Littleton CO  
Patton, Ruth - San Jose CA  
Fruitt, Bobby - Grants Pass OR

Richards, George - Chadwicks NY  
Rogie, Harry - Pine Grove CA  
Rogie, Marge -  
Roubal, Kathy - Broadview IL  
Roubal, Eileen -

Schapler, Roy - Portland OR  
Shellenberger, Bob - Stockton CA  
Shellenberger, Alice  
Soeters, Dorothy - Santa Rosa CA  
Soeters, Harold -

Tefft, Tom - Sierra Madre CA  
Tefft, Diane -  
Thompson, Claudia - Laramie WY  
Thompson, Carolyn -

Todd, Nanch Lee - Alamo CA  
Todd, Edward -  
Smith, Janet - Glen Mills, PA  
Walker, Margaret - Glen Mills, PA

Watson, Bill - Summit NJ  
Watson, Jeanne -  
Watson, Jim -  
Watson, Barbara -  
Wilson, Bill - Boise ID  
Wilson, Mary Alice -

## TRUCKEE DONNER TOUR

Buses will be ready for boarding and loading breakfast and lunch supplies 15 minutes before departure time. We have other buses due to arrive at your departure time so be sure to have everything you may need: extra water, camera, film, medications, light jacket, etc., so your bus can leave on time.

Depart Radisson via Hwy 160 East to US Hwy 80 East.

Breakfast stop at Gold Run Rest Area. On arrival, please allow the helpers to exit the bus first to set up for breakfast distribution. 20 MINUTE stop for breakfast and clean-up.

Continuing on US 80 East, take the Eagle Lake Road off ramp, to view a Trails West marker and a section of the emigrant trail from the bus. In .4 mi. the bus will stop to let off passengers for a short, strolling walk on a section of the Emigrant Trail, the Old Dutch Flat Road and the Lincoln Highway. This is easy walking with plenty of time (20 MINUTES) and the bus will pick you up at the end of your walk. Closed toe shoes are advised for any of the tours.

Continuing on Hwy US 80 East take the Cisco Grove off-ramp and remain on old Hwy 40 to Donner State Park.

Crossover Hwy 80 toward Soda Springs.

Bus will stop beyond the Sugar Bowl Ski resort garage where you may exit the bus. Take your cameras and stay close to the guide while points of interest are identified, diary excerpts read and questions answered. Short TEN MINUTE stop.

Continue toward Donner Lake pulling over for a brief stop to view Donner Lake and the Chinese wall. Pictures will have to be taken through the windows. Continue downgrade.

View the west end of Donner Lake while continuing toward Donner Memorial State Park, still on old Hwy 40. By-pass Donner Park and exit onto Hwy 80 East toward Truckee. Leave Hwy 80 at off-ramp Hwy 89 North. This will take you past the site of the George Donner Camp. About one half mile farther the bus will turn off to Prosser Recreation Site. You will travel approx. 2 miles on pavement to where you will have lunch.

On arrival, please allow the helpers to exit the bus first to set up for the lunch distribution. 25 MINUTE stop for lunch and clean-up. There are the usual porta-potties at this site and unfortunately, not where you want them. You will have to walk approx. .2 mi. from the picnic site. Please avail yourself of the bus facilities. Just pretend you are in an airplane!!

Depart from Prosser Creek Site, return to Hwy 89 and enter the George & Jacob Donner Camp Site. The bus will drop all passengers and try to park. He may have to go out and return to pick up so PLEASE be aware of the time. You will have 30 MINUTES with 4 or 5 archaeologists to guide you around the site. We have had confirmation from Dick Markley, National Forest Service, Tahoe National Forest, Dr. Donald Hardesty, Gail Kromydas. Perhaps Susan Lindstrom & Carry Smith, Archaeologists, will join us for one of the tour days.



This will be an exciting walk with participants of the "dig". There are unisex pit toilets here.

Depart from Donner Camp Site via Hwy 89 to Hwy 80 West. After the Ag Inspection station you will exit from Hwy 80 and go back on Old Hwy 40 to the entrance to the Donner Memorial State Park.

Side trip to China Cove to view the three passes. Quick 5 MINUTE stop.

At the Park you will have a ONE HOUR stop to see the slide show on the half-hour, museum exhibits, the historic walk to the cabin site, a nature trail walk and living history exhibit by OCTA members. You might also want to use the rest rooms. NOTE: Slide show is 25 minutes, seats 60 people. Your OCTA name badge is your ticket into the museum.

Return to Hwy 80 West then a short climb to the Donner View Vista Point. Here you will see the Passes from a different angle and a good view of the snowsheds and beautiful Donner Lake. A quick 5 MINUTE picture stop.

Continuing on Hwy 80 West, you will have a 20 minute ride while your guides may catch a few winks and you can rest your eyes. Then it is time for the last stop of the tour, Emigrant Gap.

At Emigrant Gap, gather close around your guide and look way down into Bear Valley and hear the story of how those incredible people took their wagons up and down these mountains.

If you think you have a boring trip home - you'd better think again!

TOUR A, TRUCKEE DONNER - Sat Aug 17, Bus 2, Green Bus, Departs 7:30 am

GUIDES - Doyle & Fiona Reed, Jerry Dyer, Ilene Hunter

Bendigkeit, Hal - Palo Alto CA

Bendigheit, Pat -

Bonham, Ken - Pollock Pines CA

Bowers, Jim - Lakewood CO

Bowers, Margaret -

Burchfield, Burch - Salem OR

Cahill, Ruth - Portland OR

Carter, Robert - Springville UT

Carter, Lyndia

Daniel, Lois - Kansas City MO

Daschel, Kate - Oregon City OR

Dillon, Marv - Pioneer CA

Dillon, Bern -

Freshour, Sidney - San Jose CA

Gieschen, Ona - Gladstone MO

Hamilton, Bob - Kansas City MO

Hamilton, Betty -

Haner, John - Redding CA

Haner, Norma -

Harding, Henry - San Jose CA

Harding, Phyllis -

Hickle, Deborah - Kansas City MO

LaFerriere, Bob - Sacramento CA

Lindburg, Norman - Salem OR

Lindburg, Donna -

Magerl, Howard - Overland Park KS

Magerl, Barbara -

Martin, Charles W Sr - Omaha NE

Martin, Mary -

McCarthy, Lois -

Pope, James - St Louis MO

Pope, Fannie -

Ricketts, Clair - Jerome ID

Ricketts, Virginia -

Root, Jack - Tucson AZ

Root, Ruth -

Scheinost, Betty - Columbus NE

Sundell, Helen - Omaha NE

van der Pas, Peter - Grass Valley CA

van der Pas, Priscilla -

Woolsey, Alayne -

## GOLD COUNTRY TOUR

Buses will be ready for boarding and loading breakfast and lunch supplies 15 minutes before departure time.

We have other buses due to arrive at your departure time so be sure to have everything you may need (extra water, camera, film, medications, light jacket, sun hat, etc.) so your bus can leave on time.

Depart the Radisson via HWY 160 East, then right on Arden Way, right on Point West, right on Response to Exposition Blvd. (Note as we turn this next corner, you can see to the left, the grounds of the California State Fair scheduled to begin the week following our convention.) Then right on Exhibition Blvd. over I-80, looping around the cloverleaf, ending southbound on I-80.

At the I-80/US HWY 50 interchange stay left for HWY 50 East, turn off on Power Inn Road turning right. Next block turn left to Folsom Blvd., then you will fork to your right onto Hwy 16 (Often signed along the way as Jackson Rd.).

Continue on Hwy 16 to Sloughhouse for breakfast. On arrival, please allow the helpers to exit the bus first to set up for the breakfast distribution. 15 MINUTE stop for breakfast and clean-up.

Two docents from Daughters of Utah Pioneers will escort you into the Cemetery, up a short incline to the Jared Sheldon gravesite. Everyone will go together. Circle around Ellen Rosa so you can hear this interesting lady. Within a few feet she will be able to weave the lives of the men and women and children who are buried here and make connections with the Joseph Aram Party, Donner Relief and Rescue, Sutter's Fort, Johnson Rancho and the Santa Fe Trail. We have allowed 35 MINUTES for this tour and you must move along as other buses will be arriving before you depart Sloughhouse.

Continue back on Hwy 16 East.

Passing Rancho Murietta, approximately two miles to the Ione turn off, turn right on Michigan Bar Road.

Continue on Michigan Bar Road until it ends, turn left toward Ione on Hwy 120 East.

Drive through Ione exiting on Hwy 108 (right) to Hwy 88 East (left).

Drive to Jackson merging with Hwy 49 South. A drive through the Argonaut Vista Point will allow you a good view of the Kennedy Head Frame, the picturesque Mother Church of the Serbian Orthodox Church in North America with it's cemetery and an overview of this lovely Mother Lode town of Jackson.

Turn left on Main St. only to turn a very quick left turn onto North Main St.

Stop at the Kennedy Mine's tailing wheels, Kennedy Wheels Historic Park. This is a 30 MINUTE stop.

Continue on North Main Street (Which will quickly becomes Jackson Gate Road.) to Hwy 49, turn North.



Next stop is ONLY 30 MINUTES. It is the old mining town of Amador City. Shops will be forewarned so enjoy an "on your own" tour of the city and it is a "city". But PLEASE, be back on the bus on time.

When you return to the bus you will be given your box lunch and your beverage if you want to eat on the bus. It is approximately one hour and 15 minutes to the next stop, the Gold Bug Mine. You may wait until the Mine stop to get your lunch and beverage. Everything is predicated on August tourist traffic and things we cannot control. Bear with us if your seatmate spills something on you!!

Wind on Hwy 49 through gold mining towns of Dry Town, Plymouth, cross the Cosumnes River leaving Amador County and entering El Dorado County. On to Nashville, El Dorado, Diamond Springs.

Detour on Pleasant Valley Rd. to Big Cut Road thru sites of Ringgold and Weberville to Placerville.

Turn on Benham St. in Placerville, to "Hangtown's" own Gold Bug Mine Park. (Please allow the helpers to exit the bus first to set up for the lunch distribution.) Your OCTA name badge will give you a tour of the gold mine with trained docents, thanks to OCTA member Jack Clough. Stop will be 45+ MINUTES inclusive for the tours and eating if you have waited. The tours take about 20 minutes and in groups of 10 so everyone can hear. An extra 10 minutes is added for restroom stop and, of course, debarking and boarding the bus.

Depart from Gold Bug Mine over Bedford Street back to Hwy 50. (Right on Hwy 50 to Placerville Dr. to Cold Springs Rd.)

Jct. with HWY 49, turn left toward Gold Discovery Site and the Sawmill Replica.

Restrooms are located in picnic areas and at the Visitor's Center.

Enjoy your self-guided tour. Again your OCTA name badge will gain you free entrance to the Museum and all other sites. Rangers do give talks but due to our time limit we did not want to schedule your time. Stop here will be ONE HOUR.

Bus will depart promptly to make way for the next group. The bus pick-up will be at the Coloma School House. Allow yourself 5 minutes to get to the bus and on board. From the Visitor's Center it is .2 mi.

The bus will continue north on Hwy 49 to Lotus Road, turning left, to travel through beautiful rolling hills and small farms. Finally arrive back to reality when you junction with Hwy 50 West for the speedy trip back to the Radisson.

If you think you have a boring trip home - you'd better think again!

NOTE: Brochures will be available for purchase at the Kennedy Tailing Wheels and Gold Bug Mine will have some interesting things to buy also. Funds from these sales help the volunteers to preserve these historic places.

9th ANNUAL OCTA CONVENTION  
Sacramento, California - August 14-18, 1991

TOUR B, GOLD COUNTRY - THU AUG 15, Bus 1, White, Depart 7:00

GUIDES - Jack Clough, Powell Greenland,

Bateman, Mike - Pocatello ID  
Bateman, Renee -  
Bishoff, Roscoe - Montpelier ID  
Bishoff, Ellen -

Bullard, Bill - Independence MO  
Bullard, Donna -  
Freudenberg, Ed - Sun Valley CA

Hardinge, Cork - Mercer Island WA  
Hardinge, Sue -  
Hesse, George - San Jose CA  
Hesse, Bev

Jones, Larry - Boise ID  
Jones, Pat -  
Kabler, Bea Parks - Madison WI  
Kittiger, Frank - La Verne CA  
Kittinger, Julie -

Larmore, Cheryl - Alamo CA  
Larmore, Elizabeth -  
Lee, Robert - Safford AZ  
Lee, Betty Graham -

Madsen, Bill -  
Meyer, Kelly - w/Larmore  
Miller, Jeanne - Sacramento CA  
Nelson, Dick - Oceanside CA  
Nelson, Nancy -

Richards, George - Chadwicks NY  
Rogie, Harry - Pine Grove CA  
Rogie, Marge -  
Roubal, Kathy - Broadview IL

Shellenberger, Bob - Stockton CA  
Sundell, Helen - Omaha NE

Thompson, Claudia - Laramie WY  
Thompson, Carolyn -

Vail, Frank - Bakersfield CA  
Vail, Penny -

Watson, Bill - Summit NJ  
Watson, Jeanne -  
Whitworth, Dale - Richmond WA  
Whitworth, Diana -



9th ANNUAL OCTA CONVENTION  
Sacramento, California - August 14-18, 1991

TOUR B, GOLD COUNTRY - THU AUG 15, Bus 2, Yellow Bus, Departs 7:30 am

GUIDES -Walt Betchart, Karl Kawahara, Don Wiggins

Berrett, Lamar - Orem UT  
Berrett, Darlene -  
Bowers, Jim - Lakewood CO  
Bowers, Margaret -

Carter, Robert - Springville UT  
Carter, Lyndia -  
Chandler, Robert - Concord CA

Daniel, Lois - Kansas City MO  
Daschel, Kate - Oregon City OR  
Davies, Vivian - La Verne CA  
Donaldson, Olive - Redding CA

Downs, Ron - St Louis MO

Dresden, Jean - San Jose CA  
Dyer, Otis - Rehoboth MASS  
Escalante, Luis - Montebello CA  
Escalante, Jessie -

Fowler, Pauline - Independence MO  
Fowler, Eric -  
Geisler, Bob - San Francisco  
Gieschen, Ona - Gladstone MO

Haines, Aubrey - Tucson AZ  
Haines, Wilma -  
Kawahara, Mae - Hilo HI  
Kunze, Lynne - Van Nuys CA  
Karrimore, Juanita - Calistoga CA

Manhart, Sharon - Montrose CO  
Manhart, Hal -  
Martin, Charles Sr - Omaha NE  
Martin, Mary

Matten, Merrill - Littleton CO  
Patton, Ruth - San Jose CA  
Pummell, Marilyn - St Joseph MO

Rickey, Stanton - Salem OR  
Rickey, Addie -  
Schapler, Roy - Portland OR  
Soeters, Dorothy - Reno NV  
Soeters, Harold -

Volk, Ron - Florissant MO  
Wilson, Bill - Boise ID  
Wilson, Mary Alice  
Woolsey, Alayne -

9th ANNUAL OCTA CONVENTION  
Sacramento, California - August 14-18, 1991

TOUR B, GOLD COUNTRY - THU AUG 15, Bus 3 Ten, Departs 8:00 am

GUIDES - Betty Laarveld, Jeanette Roberts

Ault, Lois - Petaluma CA

Bendigkeit, Hal - Palo Alto CA

Bendigheit, Pat

Brown, Mike - Wyoming

Burchfield, Burch - Salem OR

Cahill, Ruth - Portland OR

Donahoe, Henry - San Francisco CA

Ellis, Jackie - Casper Wy

Ellis, Pinky - Harding, Henry - San Jose CA

Harding, Phyllis

Hamilton, Bob - Kansas City MO

Hamilton, Betty -

Hatch, Garn - Salt Lake City UT

Hunter, Ilene - Davis CA

Hutchinson, Daniel - Boise ID

Hutchinson, Linda -

Hutchinson, Michael -

Lewin, Jackie - St Joseph MO

Lindburg, Norman - Salem OR

Lindburg, Donna -

Martin, Charles W Jr - Richmond IN

McCarthy, Lois - Portland Or

McNabney, Elaine - Kansas City MO

McNabney, Rodney -

Mooney, Sylvia - Kansas City MO

Pope, James - St Louis MO

Pope, Fannie -

Root, Jack - Tucson AZ

Root, Ruth -

Scheinost, Betty - Columbus NE

Sloan, Carl - Seattle WA

Taylor, Marilyn -

Threlkeld, Kay - Fort Laramie WY

van der Pas, Peter - Grass Valley CA

van der Pas, Friscilla -

Zittler, Herman - Carpinteria CA

Zittler, Betty -



9th ANNUAL OCTA CONVENTION  
Sacramento, California - August 14-18, 1991

TOUR 8, GOLD COUNTRY - SAT AUG 17 - Bus 1 White, Departs 7:00

GUIDES - Jack Clough, Powell Greenland, Walt Betschart

Anderson, Ruth - New Ulm MN  
Beach, Jim - Williamsville NY  
Budde, Jim - Grandview MO  
Budde, Judy - Grandview MO

Chadey, Henry - Rock Springs WY  
Chadey, Helen - Rock Springs WY

Davis, Dick - San Francisco  
Davis, Virginia -  
Dragoo, Sandy - Greenfield IN

Eberhardt, Elmer - Eureka CA  
Eberhardt, Betty  
Edwards, George - Midland TX  
Edwards, Marj -

Hunt, Tom - Palo Alto CA

Johnson, David - San Jose CA  
Johnson, Lisa - Johnson, Lois - Santa Maria CA

Lund, Ron - Casper WY

Marshall, Ross - Merriam KS  
Marshall, Jana - Merriam KS  
Mitchell, Larry - Santa Rosa CA

Pruden, Tammy - Eureka  
Putman, Dr Carl - Faribault, Minnesota  
Putnam, Bea -

Rea, Ray - Oregon City Or  
Rea, Marjane -  
Ripley, Bob - Wichita KS

Shattuck, Bob - Grass Valley CA  
Shields, Lorn - Albuquerque NM  
Shields, Louise -  
Taplin, Frances - Eureka

Underbrink, Lee - Casper WY  
Waggoner, Sandy - Greenfield IN  
Watkins, George - Dillon MT

9th ANNUAL OCTA CONVENTION  
Sacramento, California - August 14-18, 1991

TOUR B, GOLD COUNTRY - SAT AUG 17 - Bus 2 Yellow, Departs 7:30

GUIDES - Betty Laarveld, Karl Kawahara, Jeanette Roberts, Don Wiggins

Aisaka, Yuji - Kyoto, Japan

Buck, Don - Sunnyvale CA

Buck, Vilma -

Burnett, Betty -

Carey, Neoma - Norwalk CA

Eilertsen, Richard - Seattle WA

Franzwa, Greg - St Louis MO

Goslovich, Georgette - Santa Rosa CA

Goslovich, Pauline

Hartley, Bill - Sandy UT

Johnson, Lois - Santa Maria CA

Mundie, Jim - Houston TX

Mundie, Sara -

Munn, Bill - Lincoln NEB

Puckett, Elmer - Elizabethtown KY

Puckett, Leigh -

Stewart, Roy - San Jose

Stewart Friend -

Tea, Roy - Salt Lake City UT

Tompkins, Jim - Beavercreek OR

Trende, Fred - Rosholt SD

Trende, Dalene -

Tuthill, Art - Williston VT

Tuthill, Mary

Velasquez, Lee - Henderson NV

Velasquez, Vivian -

Washington, Bette - Seattle WA

Watkins, Henry - Durham NC

White, George - Gilroy CA

White, Evelyn -



## ROLLER PASS TOUR/HIKE

The Roller Pass hike is five miles, round trip, along the Pacific Crest Trail. There is an 800 foot elevation gain beginning at the 7000 foot level. The first one-third of the trail is very rocky so sturdy hiking boots are a must. Be sure to bring along a container of water and a small pack to carry your bag lunch up to the Pass. Unless you are in fairly good condition, the trip should not be attempted.

The bus will be ready for boarding and loading food supplies 15 minutes before 7:15 a.m. departure time.

We have other buses due to arrive at your departure time so be sure to have everything you may need (extra water, camera, film, medications, light jacket, sun hat, etc.) so your bus can leave on time.

The bus will depart the Radisson via Hwy 160 East to US Hwy 80 East.

Breakfast will be served on the bus to give you more time to enjoy your hike.

From Hwy 80, take the Cisco Grove off-ramp and remain on old Hwy 40 to Donner Summit.

Cross over toward Soda Springs.

Before stopping at the Alpine Skill Institute (ASI) parking lot, the hikers will be divided into two groups - "A" & "B".

Group A will then exit the bus and begin the hike up Roller Pass.

On arrival, please allow the helpers to exit the bus first to set up for the lunch distribution. You are expected to carry your bag lunch that may be eaten at the Pass.

After leaving the bus, hikers must rely on the bushes for the ladies and trees for the men for there are no other facilities. Be prepared and bring toilet tissue.

Group B will remain on the bus for the short drive to the Donner Pass Overlook. The guide will indicate points of interest.

Group B will return to ASI and begin hiking to Roller Pass approx. 30 minutes after Group A began to hike. This is to avoid congestion at Roller Pass.

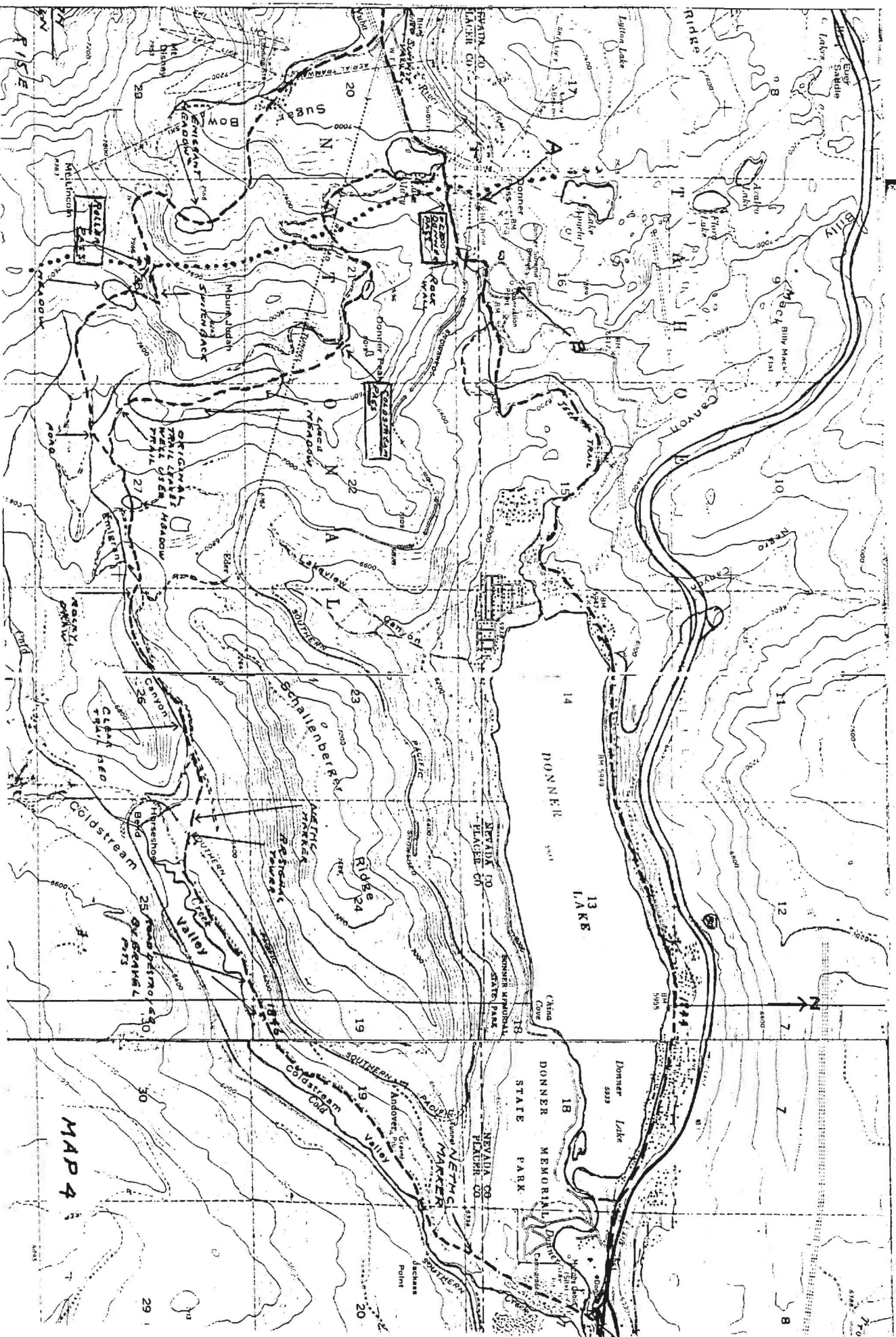
Chuck Graydon will arrive at Roller Pass by Magic Carpet to narrate the story of the Pass to each group.

After the lunch break, Dick Fores will remain at the Pass to take each group on the switchback trail up the Pass.

IN CASE OF EMERGENCY, Dr. Harvey Blume will be at the Pass with two trucks. (No, Aunt Hattie, you are expected to hike back to the bus. This is not a one-way shuttle.)

Upon returning to the bus, Group A will drive to Donner Pass Overlook and return in approx. 30 MINUTES to pick up Group B.





MAP 4

POINT A - ASI. PARKING LOT  
POINT B - OBSERVATION POINT  
----- EMIGRANT TRAIL  
..... PACIFIC CREST TRAIL



The guide will enlighten, entertain and educate you during your return trip to the Radisson.

If you think you'll have a boring trip home - you'd better think again!

TOUR C, ROLLER PASS - THU AUG 15, Bus 1 Pink, Departs 7:00

GUIDES - Steve Larmore, Nancy Westenburg, Virginia Hammerness, Curtis Grant

Burnett, Betty - St Louis MO  
Crary, Eloise - Modesto CA  
Davis, Dick - San Francisco CA  
Dolinich, Peggy - Seattle WA  
Doyle, Susan - Albuquerque NM

Dyer, Jean - Rehoboth MA  
Elig, Nancy - Bethel OH  
Franzwa, Greg - St Louis MO  
French, Porter - Grinnell, Iowa

French, Rebecca -  
Grambsch, Victor - Minneapolis MI  
Grant, Nancy - Modesto

Hayes, Pete - Sacramento CA  
Hill, Bill - Centerbeach, NY  
Hill, Jan -  
Hill, Will -  
Hileman, Brock - Casper Wy

Hileman, Levida -  
Holden, Bill - Fair Oaks CA  
Hunsaker, Dave - Baker City OR  
Jones, Theo - San Francisco  
Jones, Jeannie

March, Carol - Los Altos Hills CA  
March, Karen -  
Nefstead, Marjorie - Santa Barbara  
Nefstead, Paul

Oliver, Gene - Reno NV  
Pruett, Linda - Merced CA  
Putman, Dr Carl - Faribault Minnesota  
Putman, Bea

Quint, California - Redding CA  
Rieck, Dick - Macomb IL  
Sinclair, Lynne - Menlo Park CA  
Tompkins, Rose Ann - Chandler AZ  
Tracy, Katherine - Millbrea CA

Tuthill, Art - Williston VT  
Tuthill, Mary  
Warren, Pamela - Paradise CA  
White, George - Gilroy CA  
White, Evelyn -

The guide will enlighten, entertain and educate you during your return trip to the Radisson.

If you think you'll have a boring trip home - you'd better think again!

TOUR C, ROLLER PASS - SAT AUG 17, Bus 1 Pink, Departs 7:00

GUIDES - Steve Larmore, Baldwin Lamson, Nancy Westerberg, Virginia Hammerness, Gordon Nash

Ault, Lois - Petaluma CA  
Clark, Bob - Spokane WA  
Clark, Atara -  
Clark, Holly -  
Clark, Angie -

Dresden, Jean - San Jose CA  
Freudenburg, Ed - Sun Valley CA  
Gredvig, Maxine, Citrus Heights CA  
Hardinge, Cork - Mercer Island WA  
Hardinge, Due - Mercer Island WA

Hatch, Garn - Salt Lake City UT  
Hesse, George - San Jose CA  
Hesse, Bev -  
Jones, Larry - Boise ID  
Jones, Pat -

Kawahara, Mae - Hilo HI  
Kunze, Lynne - Van Nuys CA  
Larmore, Cheryl - Alamo CA

Lewin, Jackie - St Joseph MO

Manhart, Sharon - Montrose CO  
Manhart, Hal -  
Martin, Charles W Jr - Richmond IN  
McClain, Paul - Oregon House CA  
McClain, Susan - Oregon House CA

McNabney, Elaine - Kansas City MO  
McNabney, Kendall -  
Mooney, Sylvia - Kansas City MO

Nelson, Dick - Oceanside CA

Nelson, Nancy -  
Oliver, Marguerite - Portland OR  
Pummell, Marilyn - St Joseph MO  
Rickey, Stanton - Salem OR  
Rickey, Addie -

Sloan, Carl - Seattle WA  
Taylor, Marilyn - St Joseph MO  
Threlkeld, Kay - Fort Laramie WY  
Vail, Frank - Bakersfield CA

Volk, Ron - Florissant MO  
Whitworth, Dale - Richland WA  
Whitworth, Diana -



## JOHNSON RANCHO TOUR

The bus will be ready for boarding and loading of Continental breakfast supplies 15 minutes before the 7:15 a.m. departure time.

We have other buses due to arrive at your departure time so be sure to have everything you may need (extra water, camera, film, medications, light jacket, sun hat, sun block, etc.) so your bus can leave on time.

Depart the Radisson via 160 East to US 80 East.

Turn off 80 East on the Lincoln-Marysville exit (16 mile mark).

Turn north, left, onto Hwy 65 (21 miles to Wheatland).

Wheatland - turn right on the light, east, on Main St.-Spencer Road.  
Turn left after crossing RR tracks. HISTORICAL MARKER.

Pass entrance to Damon Ranch to historical Emigrant Trail Marker.  
Debarb with cameras for a short talk and picture taking.

Next stop is Johnson Rancho. Time of stay at the Rancho is approximately 1 HOUR 30 MINUTES.

Arrive Johnson Rancho. There will be an outhouse for your use. Walking will be minimal but the ground is uneven so sturdy shoes are advisable.

There will be plenty of knowledgeable on-site guides to explain what is known about this site. Learn first hand of the work the Steed Family has done making this site accessible to the public. Your guide, OCTA member Jack Steed has written a book about their work.

Time allotted for tour on site is approximately 2 HOURS.

If you think you have a boring trip home - you'd better think again!

### TOUR D, JOHNSON RANCH - THU AUG 15, Gold Bus, Departs 7:15 am.

GUIDE - Jack Steed, Pat Loomis

Arbuckle, Helen - San Jose CA

Bakalinsky, Adah - San Francisco

Born, Steve - Granada Hills CA

Davis, Bill - Sacramento CA

Davis, Ruth -

Hafer, George - Chico CA

Hafer, Martha - Chico CA

Hook, Eileen - Sacramento CA

Honsey, Kay

Johnson, Lois - Santa Maria CA

Lamson, Baldwin - Encino CA

Lamson, Ormie

Leippe, Al - San Jose CA

Levy, Joann - Woodland Hills CA

Levy, Dan -

Magerl, Howard - Overland Park KS

Magerl, Barbara -

Millet, Jeffrey - Santa Ana CA

Mills, Rick - Roseville CA

Mills, Linda -

Neasham, Irene - Milbrae CA

Pruitt, Bobby - Grants Pass OR

Ricketts, Clair - Jerome ID

Ricketts, Virginia -

Schmidt, Earl - Palo Alto CA

Schmidt, Patricia -

Shields, Lorn - Albuquerque NM

Shields, Louise -

Stock, Rod - Reno NV

Sutton, Irv - Pueblo CO

Sutton, Mable -

Vought, Buzz - San Francisco CA

Vought, Marian -

Walker, Margaret - Wilmington DE

## JOHNSON RANCHO TOUR

The bus will be ready for boarding and loading of Continental breakfast supplies 15 minutes before the 7:15 a.m. departure time.

We have other buses due to arrive at your departure time so be sure to have everything you may need (extra water, camera, film, medications, light jacket, sun hat, sun block, etc.) so your bus can leave on time.

Depart the Radisson via 160 East to US 80 East.  
Turn off 80 East on the Lincoln-Marysville exit (16 mile mark).  
Turn north, left, onto Hwy 65 (21 miles to Wheatland).

Wheatland - turn right on the light, east, on Main St.-Spencer Road.  
Turn left after crossing RR tracks. HISTORICAL MARKER.

Pass entrance to Damon Ranch to historical Emigrant Trail Marker.  
Debarb with cameras for a short talk and picture taking.

Next stop is Johnson Rancho. Time of stay at the Rancho is approximately 1 HOUR 30 MINUTES.

Arrive Johnson Rancho. There will be an outhouse for your use. Walking will be minimal but the ground is uneven so sturdy shoes are advisable.

There will be plenty of knowledgeable on-site guides to explain what is known about this site. Learn first hand of the work the Steed Family has done making this site accessible to the public. Your guide, OCTA member Jack Steed has written a book about their work.

Time allotted for tour on site is approximately 2 HOURS.

If you think you have a boring trip home - you'd better think again!

TOUR D, JOHNSON RANCH - SAT AUG 17, Morning. Bus 1, Gold, Departs 7:15

GUIDES - Jack Steed, Pat Loomis

Berrett, Lamar - Orem UT  
Berrett, Darlene -  
Blecha, Arvid - Denver CO  
Blecha, Anita -

Brannian, Rochelle - Iowa City IA  
Brannian, Terry -  
Brown, Carlos - Reno NV  
Brown, Mary -

Cahill, James - Coronado CA  
Davies, Vivian - La Verne CA  
Dieterich, Robert - Fair Oaks CA  
Dieterich, Adrienne - Fair Oaks CA

Duba, Roger - San Rafael CA  
French, Porter - Grinnell Iowa  
French, Rebecca - Grinnell Iowa

Garrison, Dwight - Portland OR  
Garrison, Myrthine - Portland OR  
Georges, Ed - Folsom CA  
Georges, Debby

Jones, Theo - San Francisco  
Jones, Jeanie - San Francisco  
Lee, Robert - Safford AZ  
Lee, Betty Graham -

Mulder, Laura - Murray UT  
Mulder, Al -

Nefstead, Marjorie - Santa Barbara CA  
Nefstead, Paul  
Oliver, Geno - Reno NV

Stelling, Morton - Lincoln NE  
Trickey, Jim - Clearwater FL  
Trickery, Pat -

Vail, Penny - Bakersfield CA  
Zittel, Herman - Carpinteria CA  
Zittel, Betty -

# DIRECTIONS

Leave the Radisson via 160, I-80 to Hwy 65  
 At mile 16, exit right, on Lincoln-Marysville Rd.  
 and merge into 65 North  
 Approx. 21 miles to Wheatland, flashing light.  
 Turn right, cross railroad tracks, Main Street  
 Turn left & park to read the Historic Marker in park.  
 Return to Main St. (Spenceville Road) continue 2.9  
 miles to second Historic Marker, turn cars/bus and  
 park opposite the marker.  
 Return on Spenceville Rd. to Damon Ranch entrance, 1  
 mile, turn in driveway and follow paved ranch road.  
 Crossover the bridge by ranch house, drive through  
 Walnut Grove, paved road, to levee road, turn left.  
 After turn you will drive .8 miles on a gravel road  
 to Johnson's Crossing.



Truckee-Donner Tours  
 Map