

## MAPPING the EMIGRANT TRAILS (MET) WORKSHOP

ST. JOSEPH, MISSOURI, 1988

MET, together with COED (the Census Of Emigrant Documents), forms the foundation for OCTA's work in the area of scholarly research, and our reputation for being an important contributor to serious historical research will largely rest on the success we have in carrying out these two programs. (It is to be confessed that I would have preferred to have named the program something a little more catchy and contemporary--like Mapping Overland Routes Today; for instance--but, upon reflection, decided that the ensuing acronym might possibly have been considered in some quarters to be a little too morbid or remindful, even tactless, for an organization primarily composed, as it undeniably is, of persons of--how shall we put it?--ever-accelerating maturity. Ever the diplomat, I settled for MET.)

The MET program is open to all members of OCTA. All you have to do as a participant is contribute your time, energy, and money. (As you can see, OCTA doesn't expect much of its volunteers.) In return, the program offers you the opportunity to greatly broaden your knowledge of the trails and enrich your understanding and appreciation of the overland experience while at the same time providing you with the satisfaction of being an active participant in an effort which will contribute significantly to our American heritage. The success of the program will almost entirely depend upon you and upon your personal commitment to historical accuracy. Guidance and support will come from OCTA, but the work, the initiative, the responsibility, the judgments will be yours. This is a program for self-motivators.

The uniqueness of our MET program lies in the fact that we will not merely be indicating the various historic overland trail routes on our maps for yet another time. We will also be undertaking an exhaustive, all-inclusive program of field verification and classification of trail remnants.

Our intention is not to draw lines on our maps which are based upon previous research efforts or general popular knowledge of the trails. Proper research, of course, will require consultation of all relevant sources, and, indeed, our efforts may be greatly aided and speeded up by reference to previous trails-mapping efforts, but the ultimate bases for the MET program must rest on the two primary sources in this area of historical research: the emigrant literature itself and the remaining physical evidence in the field.

It would help considerably if all participants in MET were to have a knowledge of the use of topographic maps and an extensive background in trails literature, but this is not what is essential. The use of maps can be learned quite quickly; diaries can be read; fieldwork can be carried on with others more knowledgeable; there are other aspects of the program which don't require this sort of expertise. What is essential to the success of this program is the unswerving dedication by you, the participants, to ascertaining as accurately as is possible the truth as to the original routing and present condition of the trails.

Obviously, this ambitious a mapping program may quite probably take us many years to complete, but that is not a primary concern. After all, OCTA intends to be around for a long time, and our goal in undertaking the MET program is not speed but to produce the definitive mapping of the overland emigrant trails.

At the same time, it should be remembered that the sooner MET is completed, the better chances we have of ensuring the preservation and protection of this nation's historic overland trails heritage. We are losing parts of this priceless heritage every year simply because of the general ignorance which is prevalent concerning the routing of the various trails.

OCTA's challenge, therefore, is to get this mapping done as quickly as possible consistent with complete historical accuracy, and then make that information available to both public agencies and private land-owners so they can no longer act in ignorance.

Thus, the MET program is an absolutely essential ingredient in our trails preservation activities. If we don't know what is out there, where it is located precisely, what condition it is in, and what potential it has, then we won't have sufficient knowledge to be able to set intelligent goals in our preservation efforts. Ignorance is preservation's worst enemy.

The primary responsibility for carrying out the MET program has been given to the chapters. Each chapter has been asked to designate a State Trails Preservation Officer to oversee state preservation work including mapping. Some chapters have indicated that they will be more active in this area than others, and some areas will quite probably remain under the jurisdiction of National. What needs to be emphasized here is that there will be plenty of room for the taking of initiative by MET volunteers under the oversight of the chapters and National. Do not feel reticent about stepping forward and volunteering to undertake the mapping of a section of trail. Under the guidelines set down in this material and under the oversight of chapter or national preservation officers (mainly to ensure that there is no needless duplication of efforts), MET volunteers will be left to carry on as they see fit. That is what OCTA volunteerism is all about.

For those of you who are not up to the strenuous fieldwork of surveying and mapping, there are other aspects of MET which may appeal to you: the compilation and ordering of the maps, ascertaining property owners along the trail, nominations to the National Register, research on specific trail problems, etc. There is work here for everyone. All you have to do is take the initiative, speak up and let us know your interests and preferences, and make your contribution. MET needs you all. We welcome your suggestions, ideas, and your participation.

Tom Hunt

## STEPS IN OCTA'S MAPPING AND SURVEYING PROGRAM

Step One: Compilation of the list of needed maps. The basic map for our trail work will be the 7.5 minute USGS topographic quad. Where these are not yet available, the map used will be the 15 minute USGS quad. A state map index will have to be procured by you from the USGS. Address:

Western Distribution Branch  
U.S. Geological Survey  
Box 25286, Federal Center (Bldg. 41)  
Denver, CO 80225

The trails must then be plotted on the index and the needed quads listed and alphabetized so they can be purchased for field use. Nothing further can be done until this step is undertaken by the chapters. Try to make the list complete the first time. This will require plotting by someone with a good knowledge of the trails.

Step Two: The quads must be purchased. It is hoped that this expense can be borne--at least in part--by the chapters, but this may very well not be practical or reasonable. National will then have to provide the funding. Each preservation officer must assess the situation within the chapter and inform the mapping committee chair of the chapter's specific needs in this regard. Since National is on a very tight and rigid budget, this information has to come in to the Preservation Office from the mapping committee well before the annual August budgeting session in St. Joe at convention time. July 1 is the deadline. This does not mean that a chapter cannot begin its mapping activities this summer if it is ready to go. I will undertake to see that chapters in need are reimbursed for expenditures (of a reasonable nature!) for needed maps to begin field work.

It is important that OCTA buy these maps whenever possible in quantities sufficient to ensure us the best discount, so it is important to have your lists in to us. We may be able to qualify as a dealer for USGS maps so that we can purchase them at the lowest discount price. This is presently being looked into.

Step Three: Mapping the Trails. Trails, sites, etc. are to be entered on the maps and verified in the field. It is going to be left up to each chapter as to how to go about this. I fully realize that some states have had much more in-depth work done on the trails than others over the years. It is up to each chapter preservation officer to place someone in charge of the mapping and surveying who knows the trails, is serious about field work, is dedicated personally to proper research procedures and to doing the best job of mapping humanly possible. The integrity of OCTA will depend upon the integrity of the work being done by our mappers. I will say no more about this. I respect the talents, dedication, and commitment to accuracy of our OCTA members. We do expect primary sources to be the basis for mapping and surveying to the fullest extent possible. If work already done and on the record is known to the mapper to be based on this research ethic, then it is acceptable as the basis for our OCTA maps. New primary sources should always be explored and utilized.

Eventually, the plan is to have four sets of each quad made up on the basis of the original field maps--one copy to be filed at national headquarters, one to be filed with the chapter, one to be filed with the federal, state, or local agency having jurisdiction over a particular section of trail, or one to be filed with the state historical society. All we need now is to concern ourselves with the one set of working field maps. -3-







Obviously, the maps will have to be properly filed and made available for use once they are completed. This may present a problem for the chapters since most do not have permanent headquarters available to them. One suggestion for handling this would be for the chapter to arrange with a local or state historical society or some college or university to house the maps and make them accessible to OCTA members and the public. Many institutions would welcome the idea of being the repository of such a valuable historical resource.

Step Four: Plotting and Recording the Field Information. The original field maps will be used to do the final plotting of the trails. This work may be of interest to chapter members who are not able to participate in field work or are not interested in doing so. Various mapping-related research projects may be appealing to other chapter members depending on their individual interests and talents. Each chapter will have to assess the human resources it has and take fullest advantage of them. The more members we have involved in this mapping project, the more successful it is going to be and the sooner it is going to be accomplished.

It should be noted that each map is to have an accompanying survey sheet. These sheets will be keyed to the maps and will contain all relevant field information, all relevant historical information, space for surveyors comments and for the comments of those subsequently using the maps. This latter is to allow for corrections, additions, etc. after the map is completed and filed. As you know, new information does turn up over the years, and we want that information to get into the record.

## TRAIL TERMINOLOGY

## Schematic Profile

- |   |   |
|---|---|
| Trace - General term for any trail remnant.   |  |
| Depression - Shallow trace the width of wagon.  |  |
| Two-track - Parallel wheel tracks separated by center mound.  |  |
| Ruts - May refer either to two-track or to a more deeply cut depression without center mound.   |  |
| Swale - A depression, but usually of larger dimensions and sloped sides.  |  |
| Erosion Feature - A trace of any sort that has been deepened and altered by subsequent wind and/or water action. Often irregular.                     |  |
| Track - Visible trace caused by compaction of surface, surface scarring, or discoloration due to salt or alkali evaporation. Little or no depression. |   |

# CLASSIFICATION CATEGORIES FOR OVERLAND EMIGRANT TRAILS

## CLASS I - PRISTINE ORIGINAL TRAIL

Map Symbol: .....

Description: The trail route remains unaltered by subsequent use or development. There is clear physical evidence of the original trail in the form of traces, ruts, scarring, or swales, some of which may be eroded and/or visible only intermitently.

Significance: Eligible for National Register of Historic Places for the integrity of route and physical evidence.

Preservation: Should be preserved from all development and impacts with a minimum of half-mile protective corridor to preserve its historic integrity and environment.

Use: Restricted to hiking and possibly horseback or bicycle riding depending on the fragility of the trail. Definitely no motorized vehicle use or competitive racing of any kind.

## CLASS II - USED ORIGINAL TRAIL

Map Symbol: \_\_\_\_\_

Description: The trail route retains its original character although subsequently used by light vehicles. The road has not been crowned, graded, bladed, or otherwise improved and typically remains as a two-track ranch road traversing the original wagon trail. Often pristine original traces, swales, or scarring are found paralleling or in conjunction with this two-track ranch road, indicating its authentic trail use. In such cases, both Class I and Class II mapping symbols are to be used to indicate the existing trail's dual characteristics.

Significance: Eligible for National Register of Historic Places for the integrity of location and character.

Preservation: Should be preserved in its present state, free from any further man-made alteration or development, including use as access road for oil/gas/mining vehicles or pipeline/utility corridor. The trail should have a half-mile protective corridor to preserve its historic environment.

Use: Restricted to hiking, horseback or bicycle riding, and light motorized vehicles as long as the historical integrity of the trail is maintained. May not be used by heavy motorized vehicles or competitive racing of any kind. In some cases, the "Used Original Trail" has been abandoned for vehicle use and is badly eroded and/or overgrown with vegetation to the point of appearing as a "Pristine Original Trail." In such cases, it may be desirable to restrict its use to hiking and horseback riding.

### CLASS III - VERIFIED ORIGINAL TRAIL

Map Symbol: 

Description: The trail route is accurately known and verified from historical sources, but due to subsequent weathering, erosion, farming, logging, mining, or other man-made causes, no actual physical evidence of the trail remains. Typically this would include established trails that once ran through forests, mountains, farming and ranching areas, across excessively hard soils or bedrock, through soft or sandy soils, down ravines, or alongside stream and rivers. There may be intermittent very short sections of trail discernible along the route but not in significant amounts.

Significance: Eligible for National Register of Historic Places for integrity of location and environment.

Preservation: Should be preserve in its present state free from any man-made deterioration of development with a half-mile protective corridor to preserve its historic environment.

Use: Restricted to hiking and horseback use consistent with preserving the historic integrity and environment.

### CLASS IV - IMPACTED ORIGINAL TRAIL

Map Symbol: 

Description: The trail route is known but the trail itself has lost its original physical integrity due to being overlaid by improved light-duty or secondary roads. Typically such impactation takes the form of bladed, graded, crowned, graveled, oiled, or blacktopped roads.

Significance: Not eligible for National Register of Historic Places. It is significant only for the ability of on-road vehicles to retrace the emigrant trails.

Preservation: None recommended. Protective corridors may be desirable in some rural or remote areas to preserve remnants of the historic environment.

Use: Unrestricted.

### CLASS V - APPROXIMATE ORIGINAL TRAIL

Map Symbol: 

Description: The trail route is no longer verifiable or accurately known. It has been destroyed entirely by highway or agricultural, urban, industrial, or utility corridor development. Only the approximate route is known.

Significance: None. It is significant only to provide a general knowledge of the trail route or to provide continuity of route between known sections of trail.

Preservation: None recommended.

Use: Unrestricted.

-----

The name of the trail is to be printed over the trail on each quad, i.e. "OREGON TRAIL," "OREGON-CALIFORNIA TRAIL," "CALIFORNIA TRAIL," "SANTA FE TRAIL." If a differently named alternate trail or cutoff is also located on the quad, that name is to be printed over that trail along with the date of opening off of the main trail (if known). For example: "HUDSPETH'S - 1849."

NOTE : ALL NOTATIONS ON THE MAPS AND ALL ENTRIES ON THE SITE SURVEY SHEETS ARE TO BE BLOCK PRINTED (OR TYPED) SO AS TO MAKE ALL ENTRIES LEGIBLE TO SUBSEQUENT USERS.

-----

#### SYMBOLS TO BE USED IN MET PROGRAM

- ⊞ = Identified Grave
- ⊕ = Unidentified Grave
- + = Possible Grave
- = Historic Site (Fort, Ferry, Ford, Bridge, Trading Post, Trail Junction, etc.)
- ▣ = National Register Site
- Δ = Register Rock
- = Known Archaeological Site
- ∅ = Historical Marker (Inscription and pertinent date entered on Site Survey Sheet)
- ➡ ← = Indicates length of designated recreational trail
- ➡ ↔ = Indicates length of trail entered in National Register of Historic Places.

Note: The symbols for indicating the length of a designated recreational trail or a segment of trail entered in the National Register of Historic Places are placed at the beginning and end of the segments. If a segment should happen to run on into a neighboring quad, place the arrow indicating that that segment continues (←) at the left-hand border of the first quad and at the right-hand border of the succeeding quad. At the termination of a given segment of designated trail, place the symbol that indicates the end (➡).

## MET GENERAL INSTRUCTIONS

Each field worker in the MET program is to have a registered Surveyor's Number. This number is to consist of the surveyor's three initials and the last two digits of the surveyor's Social Security number. Example: THH-19. This number is to be included on all your maps, site survey sheets, and supporting documentation. This is most important as it will allow OCTA and the users of MET materials to identify the compiler. The MET program is to be an on-going, open-ended project. The site survey sheets provide for additional comments in later years as more materials pertaining to the trails are unearthed and for comments of subsequent users. Experience has taught us that new trail materials bearing on the locations of emigrant routes do turn up from time to time and that the routing of some sections of trail or the location of historic trail sites may never be known with complete certainty or may be controversial and remain permanently in dispute.

On the maps, the Surveyor's Number is to be placed at the top of the quad sheet immediately to the left of the map heading. In addition, the surveyor is to add the last two digits of the year in which the surveying is being done to the end of his number. Example: THH-19-88 would mean that the surveyor did his trail verification work in 1988.

If you are not able to complete all your trail verification work in one year, or if some other MET participant does part of the surveying work in that particular quad, then his Surveyor's Number and the year (or years) in which it was done will also appear at the top of the quad to the left of the map heading.

NOTE: No section of trail is to be entered on the quads unless it has actually been surveyed in the field and verified. The surveyor is to leave any unverified sections unplotted. The entire point of the MET program is the verification and classification of trail segments by the surveyor.

## MAPPING INSTRUCTIONS

Each 7.5 minute quad (or 15 minute quad) will be assigned a Quad Code number within the state being surveyed. It is essential that each quad be assigned its own number before mapping within a state begins. We want no confusion because of the same number appearing on two different quads. This Quad Code number will consist of the two letters of the zip code abbreviation for that state and a number. For example: NV-1 indicates that the map in question is quad number 1 in the series of quads covering the state of Nevada. These maps are to be numbered sequentially from east to west across the state. If more than one series of quads is required to track the different trails across a state, then the earliest opened route will receive the lower numbers in sequence all across the state, and later trails will receive their numbers in their order of being opened. These Quad Codes are to be entered in the upper right-hand corner of each quad sheet above the name of the quad and also on any Site Survey Sheets pertaining to that particular quad.

Names associated with the various trails and names related to all sites along the trail are to be printed on the maps at the appropriate place along with the designated symbol. If there is more than one unit within a category on a given quad, then these units will be assigned numbers in sequence from east to west, and these numbers will accompany the designated symbol. For example: on NV-89 (quad 89

in the state of Nevada series), there are two Historical Markers indicated. The one furthest east on the trail will be designated ~~Ø~~1 , and the one further to the west will be designated ~~Ø~~2 . On the accompanying MET SITE SURVEY SHEET, the number "1" will be entered in the space opposite the "Historical Marker" category for the marker further east. On a separate MET SITE SURVEY SHEET, the number "2" will be entered for the second marker. If there were more historical markers in this quad, each would receive a higher number. In the next quad, the numbering would begin all over again with "1".

Each historical unit receiving a symbol on the map is to be entered on a separate set of MET SITE SURVEY SHEETS.

ALL NOTATIONS ON THE MAPS ARE TO BE BLOCK PRINTED. OTHER PEOPLE HAVE TO BE ABLE TO READ WHAT IS ENTERED.

## EXPLANATION OF MAPS

### Topo Quad NV-89

- Ⓐ - NV is the zip code abbreviation for the state of Nevada; -89 indicates that this quad is the eighty-ninth in the series of quads for Nevada beginning in the east and numbering westward.
- Ⓑ - THH-19 is the surveyor's code number; -87 indicates that all the surveying and verification was done in 1987. Since there are no other notations, that means that all the mapping work was done by this surveyor and completed in 1987.
- Ⓒ - Name of the main emigrant trail.
- Ⓓ - Alternate route indicated.
- Ⓔ - Symbol for Historic Site--Lassen Meadows, the junction of the Humboldt River Route (North/West Side Branch) with Applegate, Lassen, Nobles' Trails.
- Ⓕ - Symbol for the beginning of a section of emigrant trail now entered in the National Register of Historic Places. This section runs for approximately 120 miles to 49 Pass on the California border.
- Ⓖ - The branching of the Applegate, Lassen, and Nobles' Trails off of the main Humboldt River Route indicated by entering their names and their dates of opening.
- Ⓗ - Symbol for Historic Marker. Since there is more than one historic marker in this particular quad, this is given the number "1" for the purpose of differentiating it on the Site Survey Sheets.
- Ⓘ - Symbol for Historic Marker. The number "2" indicates that it is the second marker on this quad.
- Ⓙ - Symbol for the continuation for a section of trail entered in National Register.

Note that the sections of trail are indicated by the appropriate Classification Symbol. Each segment is also indicated by the appropriate roman numeral. It is not necessary to add the roman numerals, but it is permissible. It sometimes helps to clarify a complicated section of trail such as this.

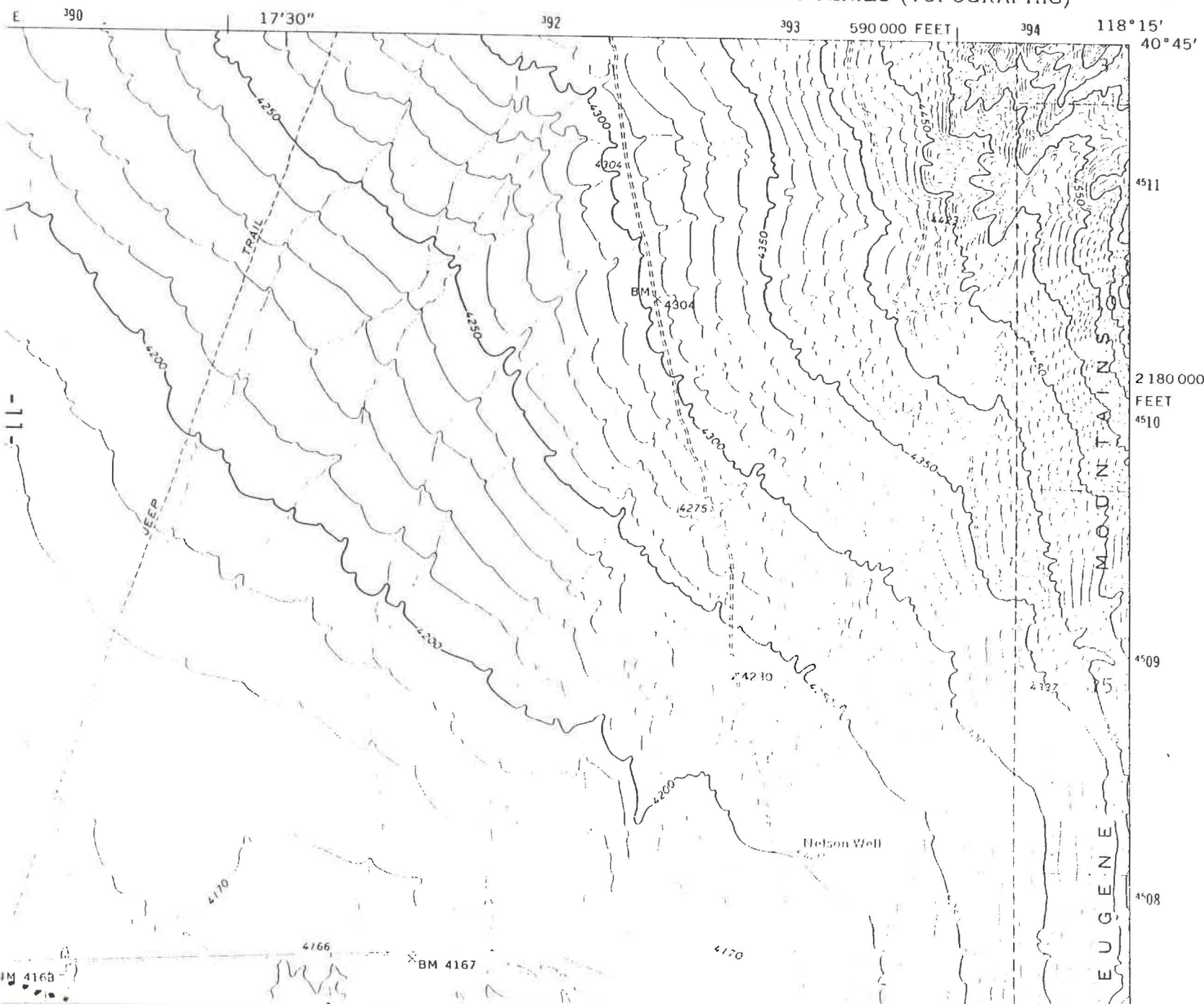
- Ⓚ - Indicates that a historic trail site, Haystack Butte, is off the trail quad in the direction of the arrow.

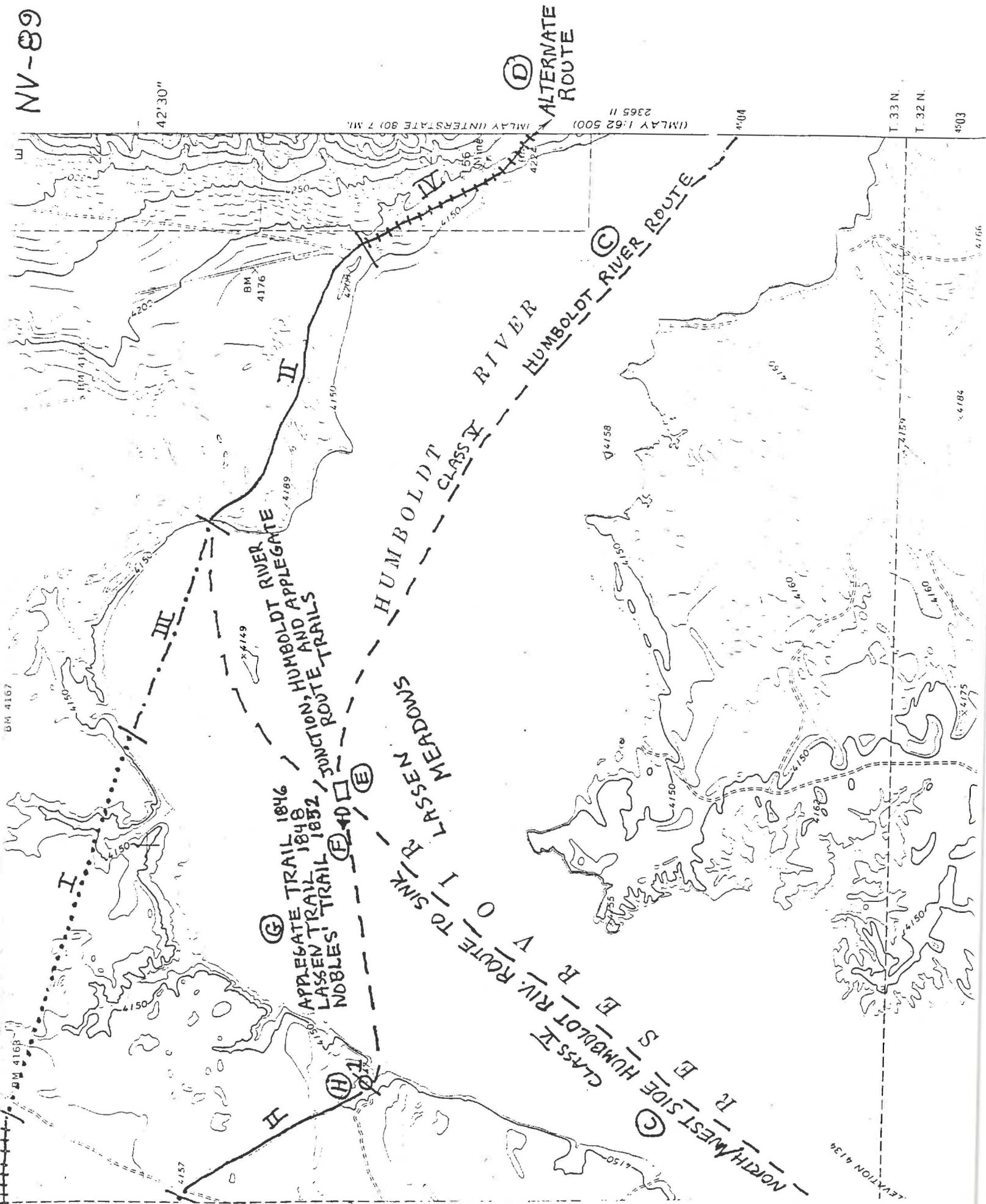
(B) THH-19-87

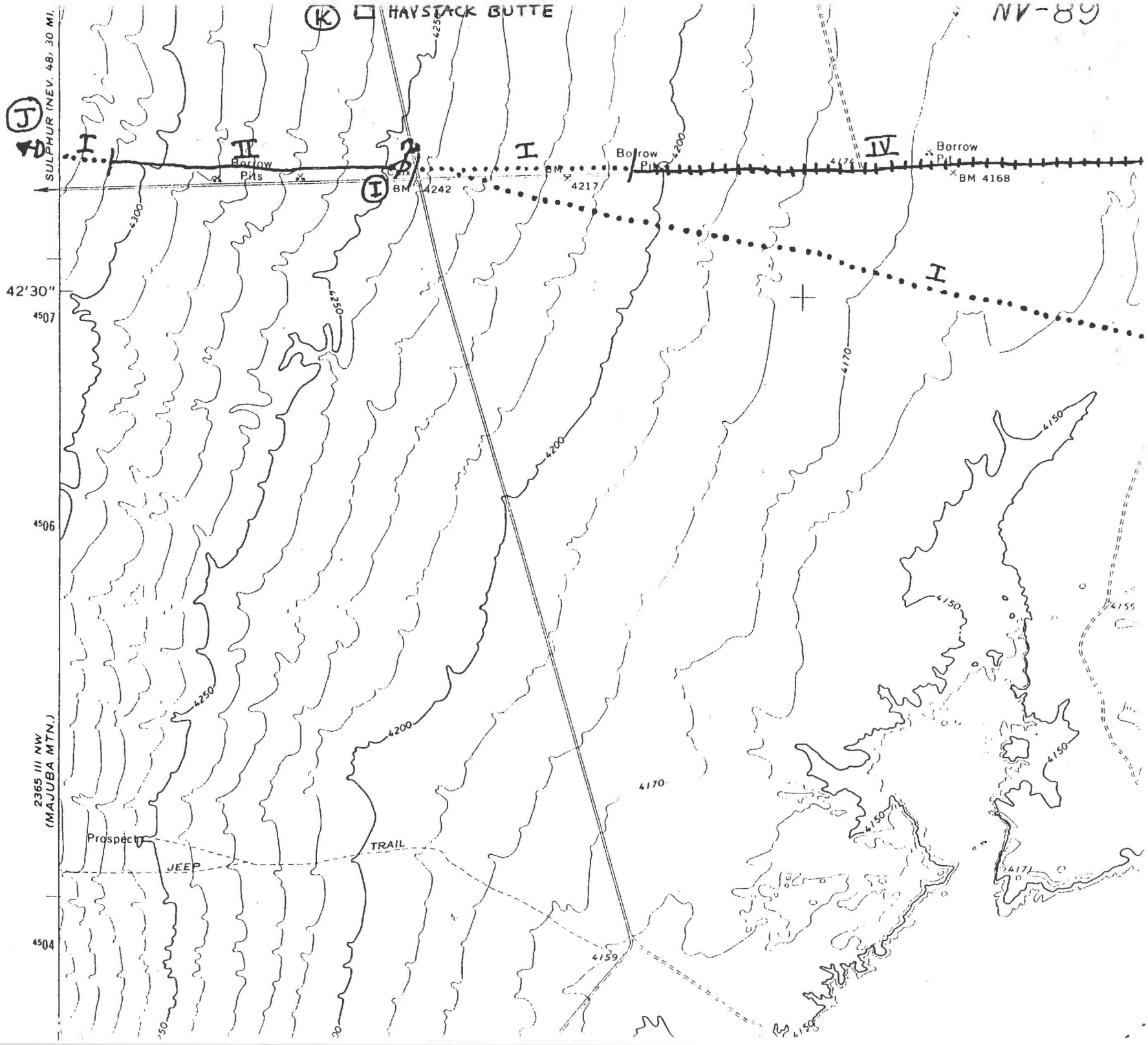
(A) NV-89

RYE PATCH RES. NORTH QUADRANGLE  
NEVADA--PERSHING CO.  
7.5 MINUTE SERIES (TOPOGRAPHIC)

2355 1/11  
(EUGENE MTS. AREA)  
1:62 500







## EXPLANATION OF MAPS

### Topo Quad NV-137

- Ⓐ - NV is the zip code abbreviation for the state of Nevada; Even though this quad is the one immediately west of NV-89, the rule is that the numbering continues in sequence from east to west within a state until the earliest-opened trail (in this case the Humboldt River Route) is completed. The quad on the Humboldt River Route was numbered NV-136, so the Applegate (Lassen, Nobles') Trail starts at NV-137.
- Ⓑ - THH-19 is the first surveyor's code number; -87 indicates that he did his surveying in 1987. The notations below his code number indicates that in 1987 he surveyed all of the trail through T.33N., R.32E. (Note that some topos, particularly in the desert regions, do not have the sections drawn in or numbered. You can either draw them in yourself using the indicated scale at the bottom of the map, or you can refer to other maps--BLM or Forest Service maps--which often do have this information printed on them. In this case, since all the mapping in this indifferntiated township was done by one person, there is no need to know the sections.) This surveyor also mapped and verified Sect. 24 of T.33N., R.31E.
- Ⓒ - DEB-22 is the code number for a different surveyor; -88 indicates that he did his work in 1988. He finished up the mapping of this quad through Sects. 21, 22, and 23 of T.33N., R.31E.
- Ⓓ - Symbol for the continuation of a segment of trail entered in the National Register.
- Ⓔ - Indicates the trail and the years in which each of them were opened along this common section of trail.
- Ⓕ - Symbol for Historic Site. This was the first of a series of springs that the emigrants called by a variety of names--most often Antelope springs. It was also the site of a later stage stop.
- Ⓖ - Symbol for a possible grave or several graves.
- Ⓗ - Additional historical information.
- Ⓘ - Symbol for Historic Site. This was the main "Antelope Spring" used by the emigrants.
- Ⓙ - Symbol for an identified grave site.
- Ⓚ - Symbol for the continuation of a segment of trail entered in the National Register.
- Ⓛ - Symbol for Historical Marker.
- Ⓜ - Symbol for Historical Marker.

① DEB-22-88

T. 33N, R. 31E.

Sects. 21, 22, 23

② THH-19-87

All of T. 33N, R. 32E.

T. 33, R. 31, Sect. 24

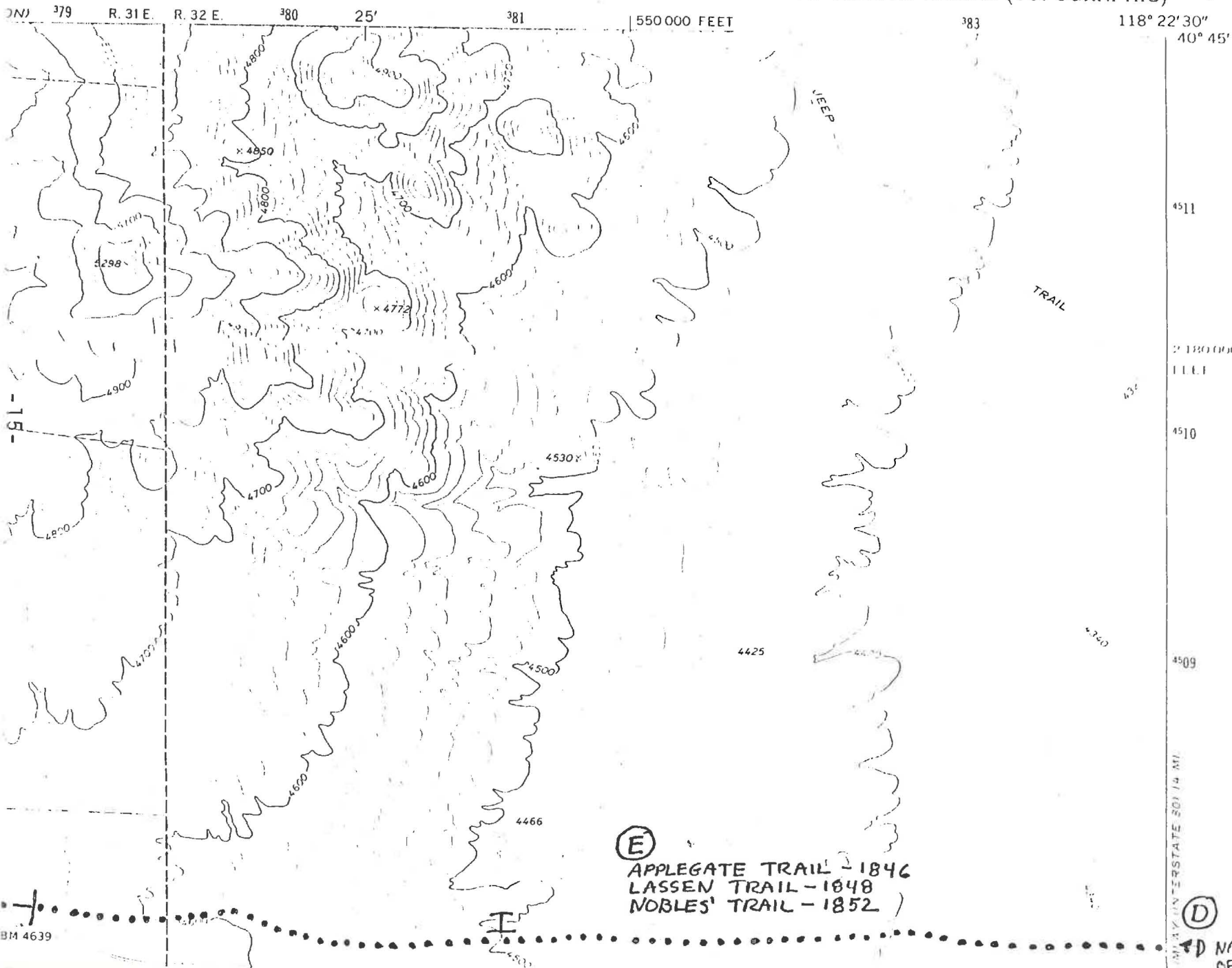
③ NV-137

MAJUBA MTN. QUADRANGLE

NEVADA-PERSHING CO.

7.5 MINUTE SERIES (TOPOGRAPHIC)

2355 IV SE  
(ALPHA MOUNTAIN)








## MET SITE SURVEY SHEET INSTRUCTIONS

Use one set of survey sheets for each unit surveyed. Please make the information legible. Fill in as much information as is possible. Be as accurate as possible in your legal descriptions. Give ownership status if known. If you think that OCTA action is merited, please give your reasons why and indicate a recommended course of action. Be as specific about this as possible, and give as much background and detail as possible so that OCTA will have some basis for reaching a decision. Comments of a general or specific nature concerning any surveyed quad are encouraged. These comment sheets will remain open for the further comments of MET users, and can prove to be very helpful in clearing up questions or problems related to the mapping of the trails. If you are a MET participant, always include your surveyor's number with your comments. Subsequent users may want to get in contact with you if they have questions to ask or corrections to make. You do not have to comment or make a recommendation unless you feel it advisable, but a comment sheet should always be included with every set of survey sheets.

The continuation sheets are to be used whenever you need more room to complete an entry. The "Reference Number" refers back to the listings on the Site Survey Sheets. For example: 1-b would indicate that the following entry is a continuation of Historical References pertaining to an Identified Grave; 6-a would indicate a continuation of the listing of names and dates on a Register Rock.

Some historic trail sites may not actually be on the trail. Examples of this would be Chimney Rock, Courthouse Rock, or Devil's Gate. If these sites appear on the trail quad, you can give them the Historic Site symbol (  ) and print in the name. If an important trail site is off the quad, at the point on the trail closest to it you can place this symbol at the side of the trail with the arrow pointing in the direction of the site:  . If the site is in the National Register, you should, of course, use the National Register symbol (  ).

DATE OF SURVEY 06/22/87NAME OF SURVEYOR THOMAS HUNT SURVEYOR'S NUMBER THH-19MAP REFERENCE RYE PATCH RESERVOIR NORTH  
PERSHING CO, NV 7.5 MINUTE 1971

## UNIT SURVEYED:

- ☒ 1. Identified Grave \_\_\_\_\_
- a. Inscription \_\_\_\_\_
- b. Historical References \_\_\_\_\_
- c. Photographic Documentation Attached \_\_\_\_\_
- ☒ 2. Unidentified Grave \_\_\_\_\_
- a. Photographic Documentation Attached \_\_\_\_\_
- ☒ 3. Possible Grave \_\_\_\_\_
- ☒ 4. Historic Site X Name LASSEN MEADOWS - JUNCTION, HUMBOLDT RIVER ROUTE AND APPLGATE (LASSEN, NOBLES') TRAILS
- a. Historic References ALMOST EVERY EMIGRANT DIARY AFTER 1846.
- b. Photographic Documentation Attached X
- ☒ 5. National Register Site \_\_\_\_\_
- a. Name of Site and Date Entered in Register \_\_\_\_\_
- ☒ 6. Register Rock
- a. Listing of Names and Dates Attached \_\_\_\_\_
- b. Condition of Names \_\_\_\_\_
- c. Photographic Documentation Attached \_\_\_\_\_
- ☒ 7. Archaeological Site \_\_\_\_\_
- a. Photographic Documentation Attached \_\_\_\_\_
- b. Reported to Archaeological Committee \_\_\_\_\_
- ☒ 8. Historical Marker \_\_\_\_\_
- Complete Inscription \_\_\_\_\_

DATE OF SURVEY 06/22/87SURVEYOR'S NUMBER THH-19

8. Historical Inscription Con't \_\_\_\_\_

Photographic Documentation Attached \_\_\_\_\_

[Note: When photographic documentation is included, individual photographs or slides should be identified either by numbers with an accompanying sheet of description or on the photographic materials themselves and included in an 8 X 11 manilla envelope with the TOPO QUAD NUMBER, DATE OF SURVEY, AND SURVEYOR'S NUMBER entered in the top right-hand corner of the envelope.]

H 9. Recreational Trail \_\_\_\_\_

Q 10. National Register Trail \_\_\_\_\_

## LEGAL DESCRIPTION OF UNIT SURVEYED:

\_\_\_\_\_ 1/4 of the \_\_\_\_\_ 1/4, Sect. 29, T 33 N, R 33 E, MDM  
Meridian

## OWNERSHIP STATUS:

Name of Owner U.S. BUREAU OF RECLAMATIONAddress P.O. BOX 218  
LOVELOCK, NV 8949

Telephone ( ) \_\_\_\_\_ (zip)

## RECOMMENDATION FOR OCTA ACTION:

DATE OF SURVEY 06/22/87NAME OF SURVEYOR THOMAS HUNTSURVEYOR'S NUMBER THH-19MAP REFERENCE RYE PATCH RESERVOIR NORTH  
PERSHING CO., NV 7.5 MINUTE 1971

## UNIT SURVEYED:

- ☒ 1. Identified Grave \_\_\_\_\_
- a. Inscription \_\_\_\_\_
- b. Historical References \_\_\_\_\_
- c. Photographic Documentation Attached \_\_\_\_\_
- ☒ 2. Unidentified Grave \_\_\_\_\_
- a. Photographic Documentation Attached \_\_\_\_\_
- ☒ 3. Possible Grave \_\_\_\_\_
- ☐ 4. Historic Site \_\_\_\_\_ Name \_\_\_\_\_
- a. Historic References \_\_\_\_\_
- b. Photographic Documentation Attached \_\_\_\_\_
- ☒ 5. National Register Site \_\_\_\_\_
- a. Name of Site and Date Entered in Register \_\_\_\_\_
- ☒ 6. Register Rock
- a. Listing of Names and Dates Attached \_\_\_\_\_
- b. Condition of Names \_\_\_\_\_
- c. Photographic Documentation Attached \_\_\_\_\_
- ☐ 7. Archaeological Site \_\_\_\_\_
- a. Photographic Documentation Attached \_\_\_\_\_
- b. Reported to Archaeological Committee \_\_\_\_\_
- ☒ 8. Historical Marker 1
- Complete Inscription BIG BEND OF THE HUMBOLDT RIVER  
1849 JUNCTION OF THE CALIFORNIA AND LASSEN -

DATE OF SURVEY 06/22/87SURVEYOR'S NUMBER THH-19

8. Historical Inscription Con't APPLEGATE TRAILS A-2  
[TRAILS WEST INC.]

Photographic Documentation Attached X

[Note: When photographic documentation is included, individual photographs or slides should be identified either by numbers with an accompanying sheet of description or on the photographic materials themselves and included in an 8 X 11 manilla envelope with the TOPO QUAD NUMBER, DATE OF SURVEY, AND SURVEYOR'S NUMBER entered in the top right-hand corner of the envelope.]

9. Recreational Trail \_\_\_\_\_

10. National Register Trail \_\_\_\_\_

LEGAL DESCRIPTION OF UNIT SURVEYED:

SE 1/4 of the NW 1/4, Sect. 30, T 33 N, R 33 E, MDM  
Meridian

OWNERSHIP STATUS:

Name of Owner LANE DUNCAN

Address 221 SOUTH HINDRY DRIVE

INGLEWOOD, CA 90301

Telephone ( ) \_\_\_\_\_ (zip)

RECOMMENDATION FOR OCTA ACTION:

DATE OF SURVEY 06/22/87NAME OF SURVEYOR THOMAS HUNT SURVEYOR'S NUMBER THH-19MAP REFERENCE RYE PATCH RESERVOIR NORTH  
PERSHING CO., NV 7.5 MINUTE 1971

## UNIT SURVEYED:

- ☒ 1. Identified Grave \_\_\_\_\_
- a. Inscription \_\_\_\_\_
- b. Historical References \_\_\_\_\_
- c. Photographic Documentation Attached \_\_\_\_\_
- ☒ 2. Unidentified Grave \_\_\_\_\_
- a. Photographic Documentation Attached \_\_\_\_\_
- ☒ 3. Possible Grave \_\_\_\_\_
- ☒ 4. Historic Site \_\_\_\_\_ Name \_\_\_\_\_
- a. Historic References \_\_\_\_\_
- b. Photographic Documentation Attached \_\_\_\_\_
- ☒ 5. National Register Site \_\_\_\_\_
- a. Name of Site and Date Entered in Register \_\_\_\_\_
- ☒ 6. Register Rock
- a. Listing of Names and Dates Attached \_\_\_\_\_
- b. Condition of Names \_\_\_\_\_
- c. Photographic Documentation Attached \_\_\_\_\_
- ☒ 7. Archaeological Site \_\_\_\_\_
- a. Photographic Documentation Attached \_\_\_\_\_
- b. Reported to Archaeological Committee \_\_\_\_\_
- ☒ 8. Historical Marker 2

Complete Inscription HAYSTACK BUTTE APPLEGATE TRAIL  
1846. ALSO USED BY LASSEN TRAIL, 1848, AND NOBLES'

DATE OF SURVEY 06/22/87SURVEYOR'S NUMBER THH-19

8. Historical Inscription Con't CUTOFF, 1852, WESTWARD TO  
CALIFORNIA. HAYSTACK BUTTE SEVEN MILES TO NORTH  
MENTIONED BY MANY DIARISTS [TRAILS WEST INC.]  
A-3

Photographic Documentation Attached X

[Note: When photographic documentation is included, individual photographs or slides should be identified either by numbers with an accompanying sheet of description or on the photographic materials themselves and included in an 8 X 11 manilla envelope with the TOPO QUAD NUMBER, DATE OF SURVEY, AND SURVEYOR'S NUMBER entered in the top right-hand corner of the envelope.]

H 9. Recreational Trail \_\_\_\_\_

Q 10. National Register Trail \_\_\_\_\_

## LEGAL DESCRIPTION OF UNIT SURVEYED:

SE 1/4 of the NE 1/4, Sect. 22, T 33 N, R 32 E, MDM  
Meridian

## OWNERSHIP STATUS:

Name of Owner SOUTHERN PACIFIC LAND CO.Address 401 I STREET  
SACRAMENTO, CA 95814

Telephone ( ) \_\_\_\_\_ (zip)

## RECOMMENDATION FOR OCTA ACTION:

COMMENTS:

[Note: If you are not the original compiler of this survey sheet, please sign and date all additional comments. If you are another participant in the MET program, please sign and include your surveyor's number.]

HAYSTACK BUTTE WAS A LANDMARK ALONG THIS  
SECTION OF TRAIL. OFTEN MENTIONED AND ALSO  
SKETCHED BY W.G. BRUFF.

THH-19

DATE OF SURVEY 04/15/88NAME OF SURVEYOR DONALD BUCK SURVEYOR'S NUMBER DEB-22MAP REFERENCE MAJUBA MTN.  
PERSHING CO., NV 7.5 MINUTE 1971

## UNIT SURVEYED:

- ☒ 1. Identified Grave X  
a. Inscription SUSAN COON, WIFE OF ISAAC COON, DIED  
AUGUST 11, 1860, AGED 40 YEARS COLE CO. ILLINOIS  
b. Historical References NO DIARY ACCOUNTS BUT WEALTH  
OF FAMILY INFORMATION. WELL DOCUMENTED  
c. Photographic Documentation Attached X
- ☒ 2. Unidentified Grave \_\_\_\_\_  
a. Photographic Documentation Attached \_\_\_\_\_
- ☒ 3. Possible Grave \_\_\_\_\_
- ☐ 4. Historic Site \_\_\_\_\_ Name \_\_\_\_\_  
a. Historic References \_\_\_\_\_  
\_\_\_\_\_  
b. Photographic Documentation Attached \_\_\_\_\_
- ☒ 5. National Register Site \_\_\_\_\_  
a. Name of Site and Date Entered in Register \_\_\_\_\_  
\_\_\_\_\_
- ☒ 6. Register Rock  
a. Listing of Names and Dates Attached \_\_\_\_\_  
b. Condition of Names \_\_\_\_\_  
c. Photographic Documentation Attached \_\_\_\_\_
- ☐ 7. Archaeological Site \_\_\_\_\_  
a. Photographic Documentation Attached \_\_\_\_\_  
b. Reported to Archaeological Committee \_\_\_\_\_
- ☒ 8. Historical Marker \_\_\_\_\_  
Complete Inscription \_\_\_\_\_  
\_\_\_\_\_

DATE OF SURVEY 04/15/88SURVEYOR'S NUMBER DEB-228. Historical Inscription Con't \_\_\_\_\_  
\_\_\_\_\_  
\_\_\_\_\_  
\_\_\_\_\_

Photographic Documentation Attached \_\_\_\_\_

[Note: When photographic documentation is included, individual photographs or slides should be identified either by numbers with an accompanying sheet of description or on the photographic materials themselves and included in an 8 X 11 manilla envelope with the TOPO QUAD NUMBER, DATE OF SURVEY, AND SURVEYOR'S NUMBER entered in the top right-hand corner of the envelope.]

H 9. Recreational Trail \_\_\_\_\_

Q 10. National Register Trail \_\_\_\_\_

## LEGAL DESCRIPTION OF UNIT SURVEYED:

NE 1/4 of the NW 1/4, Sect. 23, T 33 N, R 31 E, MDM  
Meridian

## OWNERSHIP STATUS:

Name of Owner \_\_\_\_\_

Address \_\_\_\_\_  
\_\_\_\_\_

Telephone ( ) \_\_\_\_\_

(zip)

## RECOMMENDATION FOR OCTA ACTION:

RECOMMENDER FOR FENCING AND MARKING BY  
OCTA. DESCENDENTS MANY AND INTERESTED. MIGHT  
BE WILLING TO HELP WITH FINANCING.

DATE OF SURVEY 04/15/88SURVEYOR'S NUMBER DEB-22

## COMMENTS:

[Note: If you are not the original compiler of this survey sheet, please sign and date all additional comments. If you are another participant in the MET program, please sign and include your surveyor's number.]

TWO OTHER MARKED GRAVES IN IMMEDIATE AREA OF COON GRAVE. NOT ORIGINAL GRAVESTONES. PURPORTEDLY TWO MEN KILLED BY INDIANS AT STAGE STOP AT LOWER ANTELOPE SPRING (NOW CALLED WILLOW SPRING). THIS IS NOT VERIFIED BUT PROBABLY TRUE.

DEB-22

## CHAPTER PRESERVATION OFFICERS

### TRAILSHEAD CHAPTER

John Leamon  
5501 N.W. Platte Purchase Drive  
Kansas City, MO 64151  
(816) 741-1146

### GATEWAY CHAPTER

### NEBRASKA CHAPTER

Mr. Kim Naden  
Box 42  
Bancroft, NE 68004  
(402) 648-3381

### WYOMING CHAPTER

Eugene Potter  
P.O. Box 417  
Glenrock, WY 82637  
(307) 436-9294

### IDAHO CHAPTER

Burt Silcock  
5902 View Drive  
Meridian, ID 83642  
(208) 888-5441

### CALIFORNIA-NEVADA-HAWAII CHAPTER

Thomas Hunt  
950 Old Trace Road  
Palo Alto, CA 94306  
(415) 941-0815

### NORTHWEST CHAPTER

Dick Ackerman (Acting)  
3027 Twin Oak Place, N.W.  
Salem, OR 97304  
(503) 581-0328

### SOUTHWEST CHAPTER

### LAND DESCRIPTION DIAGRAM

STANDARD			T5N		PARALLEL			
				T4N				
				T3N				
				T2N				
BASE				T1N	LINE			
R3W	R2W	R1W	R1E	R2E	R3E	R4	R5E	
			T1S					
			T2S					
			T3S					

Diagram showing division of tract  
into Townships

36	31	32	33	34	35	36	31
1	6	5	4	3	2	1	6
12	7	8	9	10	11	12	7
13	18	17	16	15	14	13	18
24	19	20	21	22	23	24	19
25	30	29	28	27	26	25	30
36	31	32	33	34	35	36	31
1	6	5	4	3	2	1	6

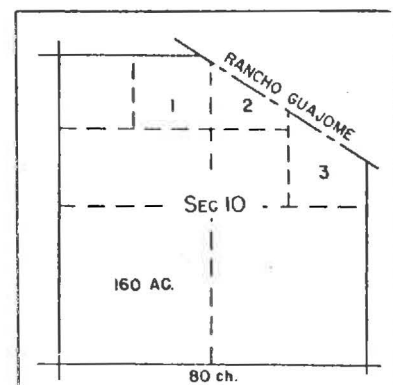
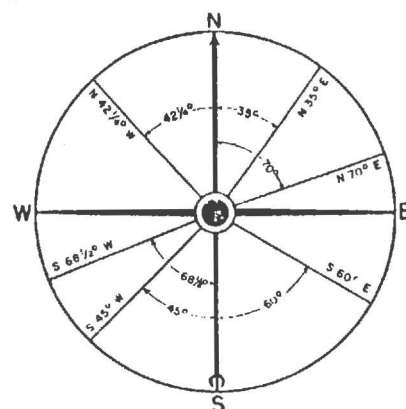
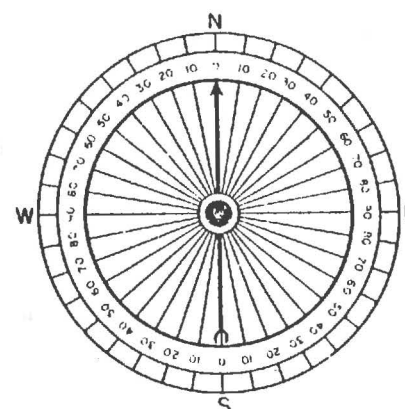
Sectional map of Township showing  
adjoining Sections

Diagram illustrating division of Fractional Section into Government Lots



60 seconds equal one minute  
60 minutes equal one degree



90 degrees in a right angle  
360 degrees in a circle

<p>40 CHAINS 160 RODS 2640 FEET</p> <p>NW 1/4 160 ACRES</p>	<p>20 CHAINS</p> <p>W 1/2 NE 1/4 80 ACRES</p>	<p>80 RODS</p> <p>E 1/2 NE 1/4 80 ACRES</p>
<p>1320 FT.</p> <p>NW 1/4 SW 1/4 40 ACRES</p>	<p>20 CHAINS</p> <p>NE 1/4 SW 1/4 40 ACRES</p>	<p>660 FT.</p> <p>W 1/2 NW 1/4 SE 1/4 20 ACS</p> <p>E 1/2 NW 1/4 SE 1/4 20 ACS</p> <p>10 CHAINS</p>
<p>SW 1/4 SW 1/4 40 ACRES</p> <p>440 YARDS</p>	<p>SE 1/4 SW 1/4 40 ACRES</p> <p>80 RODS</p>	<p>1320 FT</p> <p>N 1/2 NE 1/4 SE 1/4 20 ACRES</p> <p>S 1/2 NE 1/4 SE 1/4 20 ACRES</p> <p>80 RODS</p> <p>W 1/2 NE 1/4 SW 1/4 SE 1/4 330'</p> <p>E 1/2 NE 1/4 SW 1/4 SE 1/4 330'</p> <p>NW 1/4 SE 1/4 SE 1/4 10 ACRES 660 FT</p> <p>NE 1/4 SE 1/4 SE 1/4 10 ACRES 660 FT</p>
<p>440 YARDS</p>	<p>80 RODS</p>	<p>330' 5 CHS</p> <p>660 FT.</p> <p>10 CHAINS</p> <p>40 RODS</p>

## Table of Land Measurements

LINEAR MEASURE	SQUARE MEASURE
1 inch = .0833 ft.	144 sq. in. = 1 sq. foot
7.92 inches = 1 link	9 sq. feet = 1 sq. yard
12 inches = 1 foot	30½ sq. yds. = 1 sq. rod
1 vara = 33 inches	16 sq. rods = 1 sq. chain
2¼ feet = 1 vara	1 sq. rod = 272¼ sq. ft.
3 feet = 1 yard	1 sq. ch. = 4356 sq. ft.
25 links = 16½ feet	10 sq. chs. = 1 acre
25 links = 1 rod	160 sq. rods = 1 acre
100 links = 1 chain	4840 sq. yds. = 1 acre
16½ feet = 1 rod	43560 sq. ft. = 1 acre
5½ yards = 1 rod	640 acres = 1 sq. mi.
4 rods = 100 links	1 sq. mile = 1 section
66 feet = 1 chain	36 sq. miles = 1 Township
80 chains = 1 mile	6 miles sq. = 1 Township
320 rods = 1 mile	1 sq. mi. = 2.59 sq. kil.
8000 links = 1 mile	
5280 feet = 1 mile	
1760 yards = 1 mile	

An Acre is:

43,560 sq. feet.	660 feet x 66 feet.
165 feet x 264 feet.	160 square rods.
198 feet x 220 feet.	208' 8" square.

or any rectangular tract, the product of the length and width of which totals 43,560 sq. ft.



## PUBLISHED MAPS

OFFICE USE  
DO NOT WRITE  
IN THIS SPACE

**Mail to: DISTRIBUTION BRANCH  
U.S. GEOLOGICAL SURVEY  
BOX 25286, FEDERAL CENTER, BLDG. 41  
DENVER, COLORADO 80225**

Ordered by: **Name**\_\_\_\_\_ **Date**\_\_\_\_\_  
**Street Address**\_\_\_\_\_  
**City**\_\_\_\_\_ **State**\_\_\_\_\_ **Zip Code**\_\_\_\_\_  
**(If applicable) Customer Order No.**\_\_\_\_\_ **Account No.**\_\_\_\_\_

**SURCHARGE:** (1) For transmittal of maps outside of the USA (except Canada and Mexico), a surcharge of 25% of the net bill will be added to cover surface transportation. Special service will be charged at full cost of service  
(2) A \$1.00 postage and handling charge is applicable on orders of less than \$10.00

**ORDERING:** (1) When ordering 20 maps or less complete all entries below  
(2) When ordering more than 20 maps, indicate the quantity of each map desired on the alphabetical list of Published U.S. Geological Survey Maps and show total maps ordered and total amount remitted below

[illegible]



U.S. Geological Survey Maps

# Price List/Order Form

Department of the Interior  
U.S. Geological Survey

Effective January 1, 1985

Topographic, Image, and Related Maps	Price	Topographic, Image, and Related Maps	Price	Thematic Maps	Price
Standard Topographic Quadrangles (7.5 minute—1:24,000, 1:25,000; 7.5 x 15 minute—1:25,000; 15 minute—1:50,000, 1:62,500, 1:63,360)	\$2.50	U.S. Base Maps:		Hydrologic Unit Map of (State)	\$2.10 to \$7.30
Orthophotoquads and Orthophotomaps	2.50	2-A. (1:2,500,000) 5 colors, including buff land tint; State & county boundaries	(set) \$6.10	Hydrologic Unit Map Of U.S.	(set) 6.10
National Atlas Separates	3.10	2-B. (1:2,500,000) same as 2-A except 4 colors and no land tint	(set) 6.10	Basement Rock Map of U.S.	(set) 6.10
1:100,000 Maps	4.00	3-A. (1:3,168,000) 3 colors, State boundaries, National parks & forests	3.10	Basement Rock Map of North America	2.10
1:250,000 Maps	4.00	3-B. (1:3,168,000) same as 3-A except 7 colors & historical boundaries & surveys	4.00	Bouguer Gravity Anomaly Map of U.S.	1.90
Alaska Boundary Series Maps (1:250,000)	2.50	5-B. (1:5,000,000) 2 colors, State and county boundaries, National parks	2.40	Coal Fields of U.S.	4.30
Alaska Federal Conservation Map	4.00	6-A. (1:6,000,000) 4 colors, State boundaries, National parks, roads & railroads	4.00	Coal Fields of Alaska	3.60
County Maps (1:50,000; 1:100,000) (per sheet)	4.00	7-A. (1:7,000,000) 2 colors, State boundaries, 48 States only	2.40	Fold and Thrust Belts of U.S.	(set) 9.90
State Maps:		8-A. (1:8,300,000) 6 colors, State boundaries, routes of U.S. explorers	2.40	Geologic Map of (State)	7.30 to 16.90
No contours, black only (1:1,000,000)	(per sheet) 3.10	10-A. (1:10,000,000) same content as 6-A	3.10	Geologic Map of U.S.	(set) 9.90
No contours, multicolor, planimetric (1:500,000)	(per sheet) 4.00	11-A. (1:11,875,000) 2 colors, State boundaries, 48 States only	1.20	Geothermal Gradient Map of N.A.	7.90
Topographic or shaded relief (1:500,000)	(per sheet) 4.00	16-A. (1:16,500,000) same content as 11-A	.70	Preliminary Metallogenic Map of N.A.	(set) 12.00
International Map of the World (1:1,000,000)	(per sheet) 4.00	U.S. Contour Map:		Subsurface Temperature Map	(set) 7.90
The World (DMA physical relief map):		7-B. (1:7,000,000) 3 colors, State boundaries, 48 States only, contours	2.40	Tectonic Map of North America	(set) 9.90
1:30,000,000—single sheet 56" X 42"	4.30	U.S. Outline Maps:		World Seismicity Map	3.10
1:22,000,000—3 sheets 57" X 34" each	(set) 10.80	5-D. (1:5,000,000) 1 color, State names & State boundaries only	1.90	GQ's Geologic Quadrangles	3.60
1:14,000,000—6 sheets 56" X 42" each	(set) 36.00	5-E. (1:5,000,000) 1 color, same as 5-D except no State names	1.90	MF's Miscellaneous Field Studies	Varies
Political Map of the World	3.10	U.S. Physical Divisions Map:		I's Miscellaneous Investigations	Varies
The World (outline map):		7-C. (1:7,000,000) 3 colors, State boundaries, 48 States only, physical divisions shown in red	2.40	GP's Geophysical Investigations	Varies
1:40,000,000 48" X 33"	3.10	North America Map:		HA's Hydrologic Investigations	Varies
1:80,000,000 25" X 18"	1.70	10-B (1:10,000,000) 2 colors	3.10	C's Coal Investigations	Varies
National Park Maps	4.00			MR's Mineral Investigations— Resource	Varies
Coastal Ecological Inventory Maps	4.00			OC's Oil and Gas Investigations— Charts	Varies
Antarctic Topographic Maps	2.40 to 4.00			OM's Oil and Gas Investigations— Maps	Varies
Satellite Image Maps	2.40 to 6.60			L's Land Use Maps	Varies
				A's Antarctic Geologic Maps	Varies

Notes: Prices subject to change annually.

Postage and handling charges: \$1.00  
on all orders of less than \$10.00.

See order form on reverse side.

## How to Obtain Maps

**USGS Mail Orders.** Order by map reference code, map name, and State. Payment by money order or check payable to the Department of the Interior—USGS must accompany your order. Your complete address, including Zip code, is required.

Send orders for all maps to:

Distribution Branch  
U.S. Geological Survey  
Box 25286, Federal Center  
Denver, CO 80225

**Commercial Dealers.** Names and addresses of dealers who sell USGS maps are listed in each State index to topographic maps. Commercial dealers set their own prices for USGS maps.

**USGS Sales Counters.** Maps of States shown below (and surrounding States) may be purchased over-the-counter at USGS Public Inquiries Offices at the following locations:

Anchorage, AK, 4230 University Drive, and Room E-146, Federal Building, 701 C St.  
Los Angeles, CA, Room 7638, Federal Building, 300 North Los Angeles Street  
Menlo Park, CA, Room 3128, Building 3, 345 Middlefield Road  
San Francisco, CA, Room 504, Custom House, 555 Battery Street  
Denver, CO, Room 169, Federal Building, 1961 Stout Street  
Washington, DC, Room 1028, General Services Administration Building, 18th and F Sts., NW  
Dallas, TX, Room 1C45, Federal Building, 1100 Commerce Street

## USGS Sales Counters (Cont.)

Salt Lake City, UT, Room 8105, Federal Building, 125 South State Street  
Reston, VA, Room 1C402, USGS National Center, 12201 Sunrise Valley Drive  
Spokane, WA, Room 678, U.S. Court House, West 920 Riverside Avenue

Maps are also available from other USGS facilities at the following locations:

Fairbanks, AK, Room 126, New Federal Building, 101 Twelfth Avenue  
Denver, CO, Building 41, Federal Center  
Bay St. Louis, MS, Building 3101, NSTL  
Rolla, MO, 1400 Independence Road

Dealer discounts are available only on maps obtained from the USGS Distribution Branch in Fairbanks, AK, and Denver, CO (Federal Center).

NAME OF SURVEYOR \_\_\_\_\_ SURVEYOR'S NUMBER \_\_\_\_\_

MAP REFERENCE \_\_\_\_\_

## UNIT SURVEYED:

- ☒ 1. Identified Grave \_\_\_\_\_
- a. Inscription \_\_\_\_\_
- b. Historical References \_\_\_\_\_
- c. Photographic Documentation Attached \_\_\_\_\_
- ☒ 2. Unidentified Grave \_\_\_\_\_
- a. Photographic Documentation Attached \_\_\_\_\_
- + 3. Possible Grave \_\_\_\_\_
- ☐ 4. Historic Site \_\_\_\_\_ Name \_\_\_\_\_
- a. Historic References \_\_\_\_\_
- b. Photographic Documentation Attached \_\_\_\_\_
- ☒ 5. National Register Site \_\_\_\_\_
- a. Name of Site and Date Entered in Register \_\_\_\_\_
- Δ 6. Register Rock
- a. Listing of Names and Dates Attached \_\_\_\_\_
- b. Condition of Names \_\_\_\_\_
- c. Photographic Documentation Attached \_\_\_\_\_
- 7. Archaeological Site \_\_\_\_\_
- a. Photographic Documentation Attached \_\_\_\_\_
- b. Reported to Archaeological Committee \_\_\_\_\_
- ∅ 8. Historical Marker \_\_\_\_\_
- Complete Inscription \_\_\_\_\_

DATE OF SURVEY \_\_\_\_/\_\_\_\_/\_\_\_\_

NAME OF SURVEYOR \_\_\_\_\_ SURVEYOR'S NUMBER \_\_\_\_\_

MAP REFERENCE \_\_\_\_\_

## UNIT SURVEYED:

- ☒ 1. Identified Grave \_\_\_\_\_
- a. Inscription \_\_\_\_\_
- b. Historical References \_\_\_\_\_
- c. Photographic Documentation Attached \_\_\_\_\_
- ☒ 2. Unidentified Grave \_\_\_\_\_
- a. Photographic Documentation Attached \_\_\_\_\_
- ☒ 3. Possible Grave \_\_\_\_\_
- ☐ 4. Historic Site \_\_\_\_\_ Name \_\_\_\_\_
- a. Historic References \_\_\_\_\_
- b. Photographic Documentation Attached \_\_\_\_\_
- ☒ 5. National Register Site \_\_\_\_\_
- a. Name of Site and Date Entered in Register \_\_\_\_\_
- ☐ 6. Register Rock
- a. Listing of Names and Dates Attached \_\_\_\_\_
- b. Condition of Names \_\_\_\_\_
- c. Photographic Documentation Attached \_\_\_\_\_
- ☐ 7. Archaeological Site \_\_\_\_\_
- a. Photographic Documentation Attached \_\_\_\_\_
- b. Reported to Archaeological Committee \_\_\_\_\_
- ☐ 8. Historical Marker \_\_\_\_\_
- Complete Inscription \_\_\_\_\_

8. Historical Inscription Con't \_\_\_\_\_

Photographic Documentation Attached \_\_\_\_\_

[Note: When photographic documentation is included, individual photographs or slides should be identified either by numbers with an accompanying sheet of description or on the photographic materials themselves and included in an 8 X 11 manilla envelope with the TOPO QUAD NUMBER, DATE OF SURVEY, AND SURVEYOR'S NUMBER entered in the top right-hand corner of the envelope.]

9. Recreational Trail

➡ ➡ 10. National Register Trail

## LEGAL DESCRIPTION OF UNIT SURVEYED:

\_\_\_\_\_ 1/4 of the \_\_\_\_\_ 1/4, Sect. \_\_\_\_\_, T\_\_\_\_\_N, R\_\_\_\_\_E, \_\_\_\_\_  
Meridian

OWNERSHIP STATUS:

Name of Owner \_\_\_\_\_

Address \_\_\_\_\_

Telephone ( ) (zip)

## RECOMMENDATION FOR OCTA ACTION:

DATE OF SURVEY \_\_\_\_ / \_\_\_\_ / \_\_\_\_

SURVEYOR'S NUMBER \_\_\_\_\_  
-----8. Historical Inscription Con't \_\_\_\_\_  
\_\_\_\_\_  
\_\_\_\_\_  
\_\_\_\_\_  
\_\_\_\_\_

Photographic Documentation Attached \_\_\_\_\_

[Note: When photographic documentation is included, individual photographs or slides should be identified either by numbers with an accompanying sheet of description or on the photographic materials themselves and included in an 8 X 11 manilla envelope with the TOPO QUAD NUMBER, DATE OF SURVEY, AND SURVEYOR'S NUMBER entered in the top right-hand corner of the envelope.]

H 4 9. Recreational Trail \_\_\_\_\_

Q 10. National Register Trail \_\_\_\_\_  
-----

## LEGAL DESCRIPTION OF UNIT SURVEYED:

\_\_\_\_ 1/4 of the \_\_\_\_ 1/4, Sect. \_\_\_\_\_, T \_\_\_\_ N, R \_\_\_\_ E, \_\_\_\_\_  
Meridian  
-----

## OWNERSHIP STATUS:

Name of Owner \_\_\_\_\_

Address \_\_\_\_\_  
\_\_\_\_\_

Telephone ( ) \_\_\_\_\_ (zip)

RECOMMENDATION FOR OCTA ACTION:  
-----

COMMENTS:

[Note: If you are not the original compiler of this survey sheet, please sign and date all additional comments. If you are another participant in the MET program, please sign and include your surveyor's number.]

COMMENTS:

[Note: If you are not the original compiler of this survey sheet, please sign and date all additional comments. If you are another participant in the MET program, please sign and include your surveyor's number.]

MET SITE SURVEY SHEET - 4

TOPO QUAD NUMBER \_\_\_\_\_

DATE OF SURVEY \_\_\_\_/\_\_\_\_/\_\_\_\_

SURVEYOR'S NUMBER \_\_\_\_\_

-----  
CONTINUATION SHEET:

Reference Number \_\_\_\_\_