

NEWS FROM THE PLAINS

SPRING 2010

VOL. XXV • NO. 2

Board Discusses Threats to Trails from Alternative Energy Projects

By Candy Moulton
NFP Editor

Threats to historic trail resources are escalating as a result of increased emphasis on alternative energy sources, the Oregon-California Trails Association Board learned at its Mid-Year Board meeting in Independence, MO, in March.

"We are being deluged with interstate transmission lines and wind farm projects," National Trails Preservation Officer Leslie Fryman told the Board.

The large number of projects has left federal land management agencies in a position of "trying to catch up with the issues of setting," she said. The large scope, and equally large size of many of the wind turbines, make it virtually impossible to fully maintain views from the trail so there are few or no modern intrusions.

"Sometimes it is all we can do to protect the trail from direct impacts...from it being bladed out as they develop roads and access to sites," Fryman noted.

Board member John Krizek, however urged the Board to "make a statement in the media, to raise the flag, raise the alarm." On projects in the Pacific Northwest, he "ran into disagreements within the NW chapter as to whether we should say anything." He asked the board to consider the issue carefully.

"People are interested in alternative energy sources, but not at the risk of a national treasure," Krizek said, referring to the trails. President Bill Martin noted that OCTA has had some success in "working within the system."

"Our current policy is that we are not accepting any adverse effects directly to trails," according to Fryman. A general stance is to request movement of developments away from the trail to at least be out of sight. However, that is not always possible with large wind power projects. OCTA must now begin to work for mitigation that represents "more than just a few markers on the trails," she added.

Seeking a way for members to provide long-lasting support to the Oregon-California Trails Association, the National Board approved establishment of the OCTA Legacy Society, which will recognize members and friends of OCTA who set up bequests as part of their estate planning. It is also possible for gifts to be made to OCTA anonymously.

National Park Service representatives updated the board on activities and noted that existing funding for OCTA is expected to be continued for the upcoming year. But as Long Distance Trails Office

Superintendent Aaron Mahr told the Board, the new budget proposed by President Barack Obama calls for cuts to Challenge Cost Share funding. Although that will need Congressional approval before being implemented, the agency has already capped CCS projects at \$20,000 each, as compared with previous limits of \$30,000.

The Board meeting was held at the National Frontier Trail Museum, which was recognized for its 20th anniversary this year.

In other action the Board:

- Approved a proposal from the Trails Head Chapter to host the 2012 convention in the Kansas City area.
- Authorized establishment of a \$25,000 line of credit with a local Missouri bank to better provide for payment of vendors while OCTA waits for reimbursement or expected income from other sources. The line of credit can be utilized only with unanimous approval of the president, vice president, and treasurer of OCTA.
- Made a policy change regarding membership of the Investment Policy Committee so that body now includes up to four members appointed by president, at least one of which will be a member of

Continued on page 5

Editor

Candy Moulton
Star Route Box 29
Encampment, WY 82325
307/327-5465
nfpocta@aol.com

Contributing Editors

Bill Martin
Deborah & Jon Lawrence
Travis Boley
Kathy Conway

**Oregon-California Trails
Association**

News from the Plains
Published quarterly
P.O. Box 1019
Independence, MO
64051-0519
888-811-6262
816-836-0989 (fax)
octa@indepmo.org

Copyright 2010

OCTA is a 501(c)(3)
Not For Profit Organization

♦♦♦

News From the Plains

Summer Issue Deadline

May 25, 2010

Send materials to
nfpocta@aol.com

2009-10 OCTA Officers

Officers, except Preservation Officer, are voting members of the Board

Bill Martin, *President*, 706 Country Club Road, Georgetown, TX 78628;
bmartinocta@gmail.com

Duane Iles, *Vice President*, P.O. Box 310, Holton, KS 66436;
96cruisin@embarqmail.com

Lethene Parks, *Secretary*, 13020 NE 93rd Street, Vancouver, WA 98682;
lethene@comcast.net

Marvin Burke, *Treasurer*, 10548 Quivas, Northglenn, CO 80234;
mdburke@msn.com

Leslie R. Fryman, *National Trail Preservation Officer*, 6944 La Havre Way,
Citrus Heights, CA 95621; catrail44@gmail.com

Glenn Harrison, *Past President*, 1132 30th PL. SW, Albany, OR 97321-
3419; gr.harrison@comcast.net

2009-10 OCTA Board of Directors

Frank "Pinky" Ellis, Casper, WY
jnellis_1010@juno.com

Patricia Etter, Mesa, AZ
patricia.etter@asu.edu

Patricia K.A. Fletcher, Sequim, WA
jpfletcher@olympus.net

Matthew Ivory, West Valley City, UT
fly_fisherman5261@yahoo.com

Doug Jenson, Idaho Falls, ID
jensondd@ida.net

John Krizek, Prescott, AZ
JKrizek@aol.com

Fern Linton, Green River, WY
flinton@wyoming.com

Barb Netherland, Scottsbluff, NE
npvm@earthlink.net

John Mark Lambertson
Independence, MO
jlambertson@indepmo.org

Quackgrass Sally, Bridger, MT
quackgrasssally@aol.com

Bill Symms, Yachats, OR
wysymms@peak.org

Bill Wilson, Boise, ID
ma_bill@msn.com

**Committee A - Headquarters,
Operations, and Publications**

Patricia K.A. Fletcher, Chair
Patricia Etter
Doug Jenson
Matthew Ivory
Duane Iles, V-P, Officer Liaison

**Committee B - Finances, Grants,
Long-Range Planning, and
Governance**

John Mark Lambertson, Chair
Barbara Netherland
Pinky Ellis
Bill Wilson
Marvin Burke, Treasurer, Officer Liaison

**Committee C - Preservation,
Collections, Public Relations,
and Property Management**

Fern Linton, Chair
Bill Symms
Quackgrass Sally
John Krizek
Lethene Parks, Secretary,
Officer Liaison

Bill Martin, President & ex officio on all
committees

Elko Set for 2010 Convention

By Jan Petersen
Convention Chair

The National OCTA Convention will be held Aug. 10-14, in Elko, NV with a theme of "Emigrants, Elko & The Elephant!"

The primary meetings for speakers and workshops will be headquartered at the Elko Convention Center in the heart of the city. Rooms have been secured at several hotels. Tours are on tap for points east of Elko in Ruby Valley and Humboldt Wells, and west to Gravelly Ford. A hiking tour will be held over part of the Green Horn Cutoff. Short side trips also will be offered for Lamoille Canyon (a Scenic Byway), Newmont Gold Mine north of Carlin, and Tuscarora, an 1870s mining town.

The convention will begin Wednesday, Aug. 10, with registration and an engaging speaker followed by workshops at the Northeastern

Nevada Museum and the California Trail Interpretive Center. Chapter meetings in the afternoon will be followed by a reception during which the Book Room will be opened, giving OCTA members the opportunity to meet authors and buy books to add to their collections.

Thursday's tours will be capped by a dinner under the trees in Lamoille Grove. On Friday the convention will again include workshops and speakers. An evening dinner at Great Basin College will include a Chautauqua performance about early cattleman and Nevada Governor John Sparks to be presented by Dr. Michael Fischer, head of Nevada's Cultural Affairs.

The convention will conclude Saturday with additional tours, followed by a Basque dinner to be served at the newly opened California Trail Center.

Post convention tours are in the

works also, so stay tuned for ongoing announcements!

We've got a full and exciting line up for those visiting Elko during the 2010 convention. The area has some of the most pristine ruts left, and we're eager to show them off to you and let you experience them for yourself.

2010 Convention

Elko, NV
Aug. 10-14, 2010

♦♦♦

For Most Current
Information Visit

www.canvocta.org

NEWS FROM CA-NV

Convention Planning Continues, Symposium in April

By Bob Evanhoe
Chapter President

Spring comes late to some of the higher elevation trail segments in California and Nevada, so as this is written much of our activities remain indoors in the planning stages. E-mails fly furiously between Elko and points west as item by item the convention schedule comes together. The Convention Committee planned to meet in Sacramento on March 20 to coordinate assignments and activities. Chair Jan Petersen in Elko is 280 miles from the nearest Board and Convention Committee

members, 520 miles from President Bob Evanhoe and 540 from Treasurer Zeke Sicotte. We do appreciate e-mail. Keep current on convention plans at the Chapter Web site, <www.canvocta.org>.

The Spring Symposium is set for April 30 and May 1 in Bakersfield. Tom Hunt has organized the activities with the Kern County Historical Society. As mentioned in the last *News From the Plains*, local historians have located the grave of Elisha Stephens of the Stephens-Townsend-Murphy party, the first emigrants to take wagons over the Sierra. The chapter will

place a plaque at the gravesite. The spring board meeting will be held Friday evening. Information on the Symposium is downloadable from the Chapter Web site. Attendees are advised to tour east through Walker Pass to experience another aspect of emigration to this part of California.

While most of our activity this year revolves around the Elko Convention, there are ongoing activities on the trails: Frank Tortorich will conduct the annual Carson Trail Cleanup; John Winner will oversee further mapping of Johnson's Cutoff and Tom Fee will round up the Fernley group to sweep the swales.



Tribal Listening Sessions Open Communication

Travis Boley
Tboley@indepmo.org

Last November, OCTA and the National Park Service partnered to sponsor two different listening sessions with representatives from tribes that were affected by the formation and use of the Oregon and California National Historic Trails. We first met in Lawrence, KS, at Haskell Indian Nations University. Though turnout was low—only three tribes represented, the Ponca, Pawnee, and Kiowa—it was a still a productive two days.

Native Americans are certainly interested in telling the story of the trail from their perspective, and the

NPS has invited them to apply for Challenge Cost Share Program grants to interpret that history. Obviously, these were sensitive issues, and there is a lot of mistrust, misunderstanding, and trepidation built up over the years. This was a first step in beginning to repair these problems, and I think we went away with the beginnings of trust, understanding, and an erosion of fear of moving forward cooperatively.

Even more constructive comments were heard later in Reno, NV. There were at least two dozen tribes represented there from all over the Great Basin and Pacific Coast. Items such as including historic tribal areas on trail maps,

including Native American stories in interpretation efforts, and inviting Native Americans to submit papers to both our convention planning committees and the *Overland Journal* for consideration were among things discussed.

One tribe is even very interested in discussing the end-points for the various branches of the California Trail, as its representatives feel the trail branches should be drawn farther west to better reflect the movement of miners to various gold fields. Whether anything comes of that discussion is not for me to say, but there was a clear indication from at least one tribe that they intend to pursue this line of discussion.

We hope to continue to hold these listening sessions in the near future. Otis Halfmoon, the Tribal Liaison for the National Park Service (and himself a Nez Perce) facilitated the meetings. OCTA Vice President Duane Iles attended the Kansas meeting with me, while OCTA board member Quackgrass Sally and National Preservation Officer Leslie Fryman attended the Reno session. We all came away looking forward to continuing to build upon the relationships we were able to establish during the sessions.

OCTA 28TH NATIONAL CONVENTION ELKO, NEVADA AUGUST 10-14, 2010

*Tours to Old Trails and Old Towns
New Mines and Scenic Mountains
New California National Historic Trail Center
Speakers, Chautauqua, Music
Booksellers, Auctions, Workshops
Good Food!*

www.canvocta.org

Visit the OCTA Store

For books and other

Trail items

www.octa-trails.org

Preservation and New Trails

Bill Martin
bmartinocta@gmail.com

Here's a fact I wasn't aware of until recently: There are pieces of nationally recognized Historic or Scenic Trails in 49 of the 50 states; only Indiana is missing a trail. And while the trails vary in purpose and geography, ranging from the Ala Kahakai National Historic Trail in Hawaii to the New England National Scenic Trail – and, of course, our Oregon, California, Mormon and Santa Fe Trails – they share some common problems, challenges and opportunities.

I had the privilege of attending February's meeting of the Partnership for the National Trails System in Washington, D.C., kicking off National Trails Week and "Hike the Hill" activities in the nation's capital. Here are a couple of facts that I found interesting:

- Partnership members reported 907,435 volunteer hours in 2009, valued at \$18,602,000 and made financial contributions of \$11,746,000. OCTA's contribution was 70,022 volunteer hours, valued at \$1,435,000 and financial contributions of \$689,680. (In all cases, it should be noted, the volunteer hours are unquestionably under-stated because of under-reporting by individuals.)

- OCTA spends a lot of time monitoring wind and pipeline projects impacting the trails, but we aren't alone. Fifteen different trails, according to a report from the National Parks Service, are dealing with energy projects that have a

potentially deleterious impact on the trails.

There was a lot more information that came out of the two-day Partnership meeting, but it was greatly encouraging to see representatives of so many trails committed to working together to protect and promote some of our most precious national resources. And it is encouraging to know that OCTA is not alone in its efforts.

I also had the privilege of participating in "Hike the Hill" activities, which included a long series of meetings (as opposed to a series of long meetings) with Senators, members of Congress and their staffs. Much of the heavy lifting was done by the incomparable Bill and Jeanne Watson, who were marking their 25th year of carrying OCTA's preservation message to Congress. They were joined by Vern and Carol Osborne, and Bert Eddins of the Southern Trails Chapter.

There are two important legislative issues that will directly impact OCTA during this session of Congress.

First, we are seeking legislation that will allow the necessary feasibility studies to prepare for the Southern National Historic Trail that will stretch from Fort Smith, Arkansas, through Oklahoma, Texas, New Mexico, Utah, and Arizona into Southern California. This will be an important addition to recognized westward emigration routes.

Second, we are trying to head off a proposal in the President's budget that would eliminate the Challenge Cost Share Program. Traditionally, a third of these funds is designated

for the National Trail System and they are vital to sustaining volunteer efforts on the trails.

Based on my personal meetings with legislators and staff on both sides of the aisle, there is great enthusiasm for the Southern Trails and little enthusiasm for cutting CCSP funding. However, we will need to closely monitor both of those issues as Congress meanders its way through the year.

As OCTA members, we owe a great deal of thanks to the many members of Congress who have stood with us down through the years and who will be there when we need them in 2010. And we can be grateful to have legislative liaisons like Bill and Jeanne Watson, who have 25 years of credibility working on our behalf.

Board

Continued from Page 1

the board of directors. The treasurer is committee chair. Current members are Treasurer Marvin Burke, Jim Budde, Chuck Martin, Dave Welch, and Barb Nederland as board representative.

- Approved committee chairs as appointed by the president.
- Approved development of a comprehensive marketing plan including initial steps of preparing a communications audit and membership survey.
- Reviewed the OCTA Strategic Plan and made recommendations for changes, which will be evaluated and presented for later approval.



Members Asked to Find New Members

Duane Iles Membership Chairman

Greetings, OCTA friends. Trail organizations all do a great job of protecting the trails and telling the story. As I am sure all would agree, OCTA is the best trail organization! One reason for this is the large membership, which makes possible the many projects we undertake.

Our membership numbers have been on a slow decline. Over the past two years the decline represents about 100 memberships. Although many similar organizations have lost far more, we should not take OCTA's membership loss lightly. If it is not reversed, the decline will adversely affect our ability to accomplish our goals.

The projects we hold dear, trail preservation, journal research, conventions, ways of life of the

pioneers, and other activities require adequate numbers of active members to accomplish. One chapter that has always been active in mapping and marking is having difficulty getting enough members to show up to accomplish anything.

A portion of our budget is derived from dues. As memberships decline, so does revenue. It does not take our accountant to tell us the relationship between membership numbers and income.

What can we do? The very first thing we can do is for all of us to consider ourselves members of the membership committee. The best way to get new members is by one-on-one recruiting such as inviting a friend to a meeting, program, trek or any other activity we do. Give a friend, a family member or a person you want to thank a gift membership. It does not cost any more than a nice

gift, flowers, or dinner out.

It is not enough to bring in a new member. We must keep him or her. That means everyone must make new members feel welcome and a part of all that is going on. Find out their interests and get them involved. A busy member is a happy member. If someone has not been to an event lately, give him or her a call. Perhaps the economy has hurt a member; maybe the chapter or another member might anonymously renew for them.

Your ideas and thoughts are very important to the membership committee. I value all of them and will always respond to you. You can contact me by writing P.O. Box 310, Holton, KS 66436, or by e-mail at 96cruisin@embarqmail.com.

NEW MEMBERS

Life Member

James Nici
Naples, FL

New Members

Rodger Alleman, Los Altos, CA
Jim Allison, Auburn, CA
Lynea Beauregard, Bennett, CO
Joan Brown, Slocumb, AL
Alan Bushbaum, Aurora, CO
Liz Carter, Eugene, OR
Pat Cywinski, Green River, WY
Gary Disette, Brighton, CO
Dudley Dufort, Rio Linda, CA
A. Entrekin, Tucson, AZ
Pamela J. Fritz, Cambridge, ID
Ed Georges, Sacramento, CA
Jim and Theona Hambleton,
Baker City, OR

Bob Harms, South Lake Tahoe, CA
Troy and Angela Harris, Gilbert, AZ
Leslie M. Heckathorn, Brownsville, OR
David Jessup, Loveland, CO
Jeff Linder, Spokane, WA
Timothy Misner, Corvallis, OR
Kayla Mitchell, Frenchburg, KY
Judson and Virginia Mygatt,
Livingston, TX
Bill Peterson, Las Vegas, NV
Gary Potter, Stansbury Park, UT
Catherine Sears-Smith, Wildomar, CA
Eric Shimabukuro, Lake Forest, IL
Angee Simmons, Kansas City, MO
Robbin Smith, Costa Mesa, CA
Ray Stokes, Sidney, NE
Dean and Dorene Trevallee,
Ramona, CA
Clifford I. Walker, Barstow, CA
Imogene Williams, Independence, MO
Michael Zeller, Kansas City, MO

Upcoming Events

**Pony Express
Sesquicentennial
Events
Washington, DC
April 10-15, 2010**

...

**OCTA Convention
Elko, NV
Aug. 10-14, 2010**

...

**OCTA Convention
Rock Springs, WY
August 2011**

FROM THE HQ MANAGER

Kathy Conway
Kconway@indepmo.org

Please join with your Headquarters Staff in extending our congratulations to the National Frontier Trails Museum (NFTM) on its 20th Anniversary. Since the museum's grand opening in March, 1990, our national office has called the NFTM home, and its staff members are our friends and partners in the telling of emigrant history. An event to commemorate this special anniversary year is being planned for April 11 at 2 p.m. at the NFTM.

Spring reminders: 1) Board of Director Election ballots will be mailed at the end of April. Please participate by voting and returning

your ballot by the due date; 2) Elko Convention Registration material is to be mailed in late April or early May; 3) It is not too late to contribute to the Annual Fund Drive. 4) 2010 Membership Rosters are still available in PDF form or at cost of \$5 per paper copy.

We are continuing to obtain new items for the OCTA store, and now have a special on the OCTA map, so stock up with books and other products.


We also encourage you to invite someone to join OCTA this year as a member, or to participate in an outing.

As always, if you have any questions, please call us toll free at 888-811-6282.

Memorial Donations Add to Annual Fund Drive


Memorial Gifts were given for Gregory Franzwa by Robin Broumley, Haworth Clover, William and Margaret Nolan, and Raymond E. Schoch; for Dick Ackerman by Glenn & Carol Harrison and Dave & Wendy Welch, for KUH Adv Ancient Voices by Bob & Ellie Burkhart, for Ron Lund by Sarah Lund, for Raechel Parker by Raechel E. Parker, for John Leamon by Jean Leamon, and for Cherie Evanhoe by Dave & Wendy Welch.

www.TourWyoming.com




ADVENTURE WYOMING

SWEETWATER COUNTY



SWEETWATER COUNTY, WY HAS MORE MILES OF STILL-VISIBLE PIONEER TRAILS THAN ANY OTHER AREA IN THE UNITED STATES.

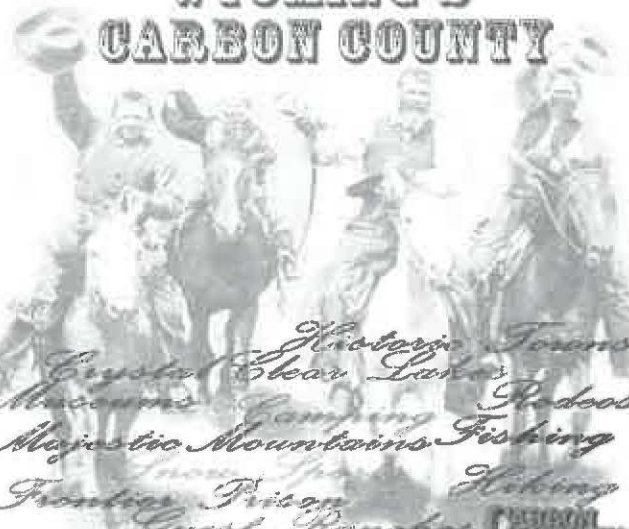


The Oregon Trail, Pony Express Route, Cherokee Trail, Overland Trail, Parting of the Ways, and Old Emigrant Trail all pass through Sweetwater County.

1 800 46 DUNES 1 800 FL GORGE

www.TourWyoming.com

ALL TRAILS LEAD TO WYOMING'S CARBON COUNTY



Historic Towns
Crystal Clear Lakes
Museums
Redeers
Majestic Mountains
Fishing
Frontier
Quest
Natural Hot Springs
Historic Hotels
Continental Divide Trail
Hiking
Hunting

Call or logon for your FREE visitor's guide
 1-800-228-3547 wyomingcarboncounty.com



Chapter to Show *In Pursuit of a Dream*

By Jim Tompkins
NW OCTA President

Northwest Chapter has planned a full year of events, many in cooperation with other trail-related organizations. We started the year in March with our annual meeting in Oregon City. The highlight of the meeting was a showing of *In Pursuit of a Dream*, OCTA's feature length movie about modern teenagers on the trail.

In April there will be two events in Oregon City related to that movie. On April 9, OCTA will receive an Oregon Heritage Award from Mary Oberst, the Governor's wife, for production of the movie. Then the next day will be the Northwest premiere of the movie for the general public at Oregon City High School. It will be a benefit for the Clackamas County Historical Society, which is attempting to reopen

its Museum of the Oregon Territory. See the Northwest Chapter Web site at the OCTA website for details.

In June we plan to hit the trail, literally, for the first of seven outings this year out in the ruts. On National Trails Day June 5, Keith May will lead a walk along the trail among the windmills, possibly in the Echo, Oregon, area. On June 18-20, Jim McGill of Idaho chapter will lead a three day Idaho Northwest cooperative workshop in Baker City, Oregon, on and about the Goodale Trail.

From June 29 to July 1, Dave Welch will lead a seminar on trail marking followed by a hands-on experience marking the Barlow Road on Davis Ranch near Gate Creek. An outing, tentatively set for mid-July and conducted by the Ezra Meeker Society, will focus on the Naches Pass Trail in the state of Washington.

A brief break for the national convention in Elko, NV, in August, will be followed by more trail events. In late August, OHTAC (Oregon Historic Trails Advisory Committee — or the Governor's Advisory Committee) will coordinate with NWOCTA for the first of two field trips. The August event will look at the Free Emigrant Road across the Cascades terminating at Oakridge, OR.

In September, the Hugo Association of Grants Pass, OR, will lead an outing along the Applegate Trail in their neighborhood. Also in September will be the annual NWOCTA fall picnic and board meeting, usually held in Centralia, WA. Then in early October, OHTAC will lead us on an outing along the Meek Cut-off near Burns, OR.

Spring Tour Set

By Lee Underbrink

This year's Western Wyoming trek, to be held Saturday May 22, will be different than what we have done in the past. We go to Brown's Hole south of Rock Springs through Wyoming to a secluded valley in Colorado and Utah. Along the way there we will go through Irish Canyon and view petroglyphs.

On the tour we will travel through Brown's Hole visiting such sites as the old Bassett Ranch, the Hay

Ranch, the Ladore School, the Gates of Ladore, the National Wildlife Center, and the Jarvie Ranch. This is not our ordinary trail outing but many of you will see places you have not seen before. The trek will be led by Tom McCutcheon, Don Hartley, Bill and Gail Robinson, and Fred and Fern Linton. This trip does not require 4X4 or high clearance vehicles.

A block of rooms has been set aside at the Rock Springs Holliday Inn, 307-382-9200, at a rate of \$75 per room.

Clark Books Win WWA Spur Recognition

The Arthur H. Clark Company and its authors have been recognized by Western Writers of America in the Spur Awards competition. Winning the Spur for Nonfiction — Historical book is Douglas C. McChristian, for his history, *Fort Laramie*, while a finalist in the same category is William B. Schillingberg, for *Dodge City: The Early Years, 1872-1886*.

A finalist in the Nonfiction — Biography category is Polly Aird with *Mormon Convert/Mormon Defector: A Scottish Immigrant in the American West*. AHC published all three books.

Trail Monitoring, Pony Express Program Planned

By A. Oscar Olson

Kay Threlkeld presented "Women on the Trails" at the Jan. 14 Crossroads membership meeting. She did a fine job as usual. She will be leaving her NPS job this year and embarking on a year long trip around the world. At the meeting we also gave out appreciation awards to several members for their service to OCTA and Crossroads. During our board meeting we held elections with the officers reelected for another year

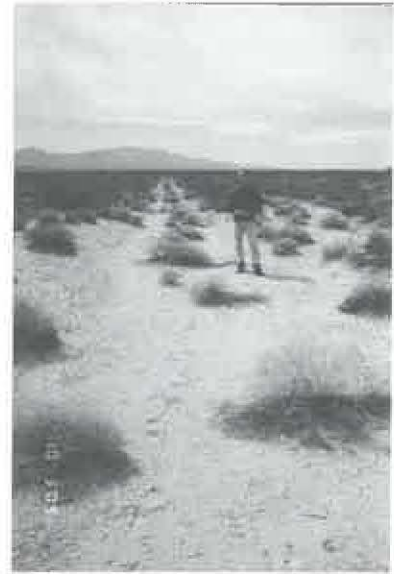
Our April membership meeting will be in support of the 150th Anniversary of the Pony Express. Joe Hatch, a Crossroads member, will present a talk about the subject. Our spring

field trip in May also will focus on the Pony Express. We encourage members to join with the Pony Express on June 14 in their activities held in Utah as part of the annual ride and the 150th anniversary.

Work parties have yet to be organized, but we do have spring maintenance and site monitoring work to be done. We had fires last fall in Skull Valley, a hotbed of trails, and have yet to survey the damage.

We want to encourage as many members as possible to head for Elko this August to support the convention.

OCTA Association Manager Travis Boley joined us last fall for our field trip into the southern corridor out of Utah.



Travis Boley on the trail in Southern Utah. (Photo by A. Oscar Olson)

Utah Teacher Wins Class Study Books from OCTA

By Vern Gorzitze

Each winter OCTA's Educational Committee, chaired by Bill Hill, sponsors a drawing for a class to win a set of one of our specially developed activity books on the Oregon-California Trail, Mormon Trail, Lewis and Clark Trail, and Pony Express Trail. Designed as educational activity books, these four books utilize both primary and secondary source materials.

The easy-to-use books are perfect for middle/high school students and teachers and adaptable for the intermediate grades. They may be used as units, for individual topics, or to reinforce prior learning. Adults like them, too!

This year's winner of the national



Utah teacher Ann Jensen will use OCTA workbooks in her 4th grade classroom. (Photo by Vern Gorzitze)

Education Committee book packet is Ann Jensen, a 4th grade teacher at Upland Terrace Elementary School in Salt Lake City, UT. She will receive the books at a special presentation assembly.

The books are full of ready-to-use information, encompassing a wide

variety of topics and related activities. Topics include motivations and objectives, historical development, supplies and equipment, methods of travel, routes traveled, landmarks, significant individuals, hazards, journal selections, and daily life and accomplishments. Interdisciplinary activities include timelines, word searches, map interpretation, reading comprehension exercises, crossword puzzles, classification, chart interpretation, graph construction, matching, summary writing and more. Additional features are "brain busters" that encourage and direct further learning/research and answer keys.

The Education Committee also invites membership participation in two other categories: Outstanding Educator Award and student Calendar Contest.



Preservation Issues Spread Across the Trail

By Leslie Fryman
OCTA Preservation Officer

This year a number of BLM trail projects funded by the American Recovery and Reinvestment Act (ARRA) of 2009 are underway. These studies are not responses to threatening developments, but instead speak to future recreational developments along NPS-designated National Historic Trails. I published a list of these BLM trail projects in Summer 2009 *NFP*, in hopes that OCTA members would contact their local BLM field offices to be involved with this work and/or offer our trail expertise.

The majority of these stimulus projects are landscape or "trail view shed" analyses, though some are prefaced with trail mapping efforts requiring OCTA's MET mapping standards. Trail view shed studies have been contracted through BLM field offices along the Oregon Trail in Idaho, the California Trail in Nevada and California, the Mormon Pioneer Trail in Utah, the Old Spanish Trail in southern California, and branches of the El Camino Real in New Mexico and Texas.

The results of these trail landscape studies, along with the advances being made by some BLM offices (particularly Wyoming) in establishing adequate protection zones along historic trails, will define and set future preservation standards specific to trail "settings." It is extremely important that OCTA have some level of input to these studies. Other projects listed below are simply trail documentation projects that OCTA is conducting or contributing

to, that periodically require NPO input or guidance from Mapping Committee Chair Dave Welch. Dave remained very active in 2009 with ongoing preservation projects in Wyoming, and halfway through the year he also took Chuck Hornbuckle's place as Preservation Officer of the Northwest Chapter. In this capacity he has challenged himself with preservation of trail landscapes in Oregon where many wind farm projects are being built, mostly on private lands.

The following is a list of this year's projects organized by state/chapter. "Projects" are largely proposed developments undergoing environmental analysis for purposes of licensing, permitting, or to secure federal funding.

One of the most wide-reaching projects involves the Ruby Pipeline. This natural gas pipeline (both subsurface and above ground) extending from Malin, OR, through northern Nevada and Utah to Opal, WY, will cross the Applegate-Lassen and California Trails in Nevada, the Salt Lake Cutoff, and possibly some other connecting trails in northwest Utah, and the Oregon Trail in Wyoming.

This is a federal undertaking mostly on BLM land. Although cultural resources studies are incomplete, the Final EIS for this project was released in January 2010. It does not adequately identify impacts to trails. Furthermore, mitigation measures, when proposed, are also completely inadequate. The Federal Energy Regulatory Commission (FERC) and BLM are lead federal agencies. OCTA is currently requesting formal

consulting party status from FERC.

The Gateway West Transmission Line also has potential far-reaching impacts to trail resources in Wyoming and Idaho. Idaho Power and Rocky Mountain Power are the proponents for a proposed interstate transmission line extending from Murphy Idaho (south of Boise) east to Glenrock, WY.

Anticipated impacts to trails across Idaho will be near the Raft River Parting of the Ways, near Fossil Butte, WY, and at a BLM-interpreted trail site near Boise. The BLM is lead agency. Cultural resources studies to identify and evaluate trail segments in the project right-of-way are currently underway. To my knowledge, OCTA has had no input to trail segment identification or assessment, which is not a good sign.

A kickoff meeting was held in December for interested parties. I teleconferenced in, as did Dave Welch for Wyoming, and several members of I-OCTA were present, but any connection between the trail studies and OCTA seemed to be lost on both BLM and their contractors. We are waiting for cultural resources reports to come out. Here are updates on some of the other projects we are monitoring:

CALIFORNIA

Lassen National Forest Motorized Vehicle Management Plan/EIS – This was initially proposed to restrict OHV travel on MET Class II segments of the Lassen Trail. In response to input from OCTA and Trails West the USFS reduced the areas restricted to two specific locations, but would

Trail Issues Affect Many Areas

not totally eliminate proposed access restrictions. This would eliminate recreational opportunities along the trail and hinder Trails West from maintaining at least one trail marker.

Donner Summit Trails Association and Placer County Parks recreational trail – This is a “built trail” along the Truckee Route of the California Trail at Donner Summit located partially on county or private land and partially on Tahoe National Forest land. Following initial OCTA and USFS input, the project is being re-planned (hopefully) to not directly impact the trail trace through the summit area. The trail setting is already impacted by ski resort and resort housing developments.

Nobles Trail Mapping – The BLM Eagle Lake Field Office is currently contracting to map 37 miles of the Nobles Trail between Susanville, CA, and the Smoke Creek Desert, NV. The BLM also will write plans for future preservation management and interpretation of all National Register-eligible segments and sites along this trail stretch. No immediate undertaking or threat to trails or trail sites is at hand.

NEVADA

California Trail Study -- The BLM Elko Field Office is updating mapping information and conducting a landscape analysis of “high potential segments” of the California Trail between the Nevada/Utah border and west to Carlin, NV. The study covers approximately 200 miles of

trail, 70 miles of which are thought to be MET Class 1 or Class II segments. OCTA CA-NV is directly involved with this project and will be conducting the mapping portion of it. Additionally, I hope to use this project as an opportunity for OCTA to be involved with the landscape (viewshed) analyses of trail segments that have been contracted by various BLM offices all over the California, Oregon, and Southern Trails systems.

Jungo Road Landfill -- A mega-landfill project is proposed for private land in the vicinity of the California and Applegate Trails west of Winnemucca, NV, and 15 miles north of Rye Patch Reservoir. There may be impacts to the trail’s setting, but no direct impacts.

IDAHO

Sunstone Pipeline Project - This is an interstate natural gas pipeline proposed by TransCanada and Williams. It would largely follow the plateau north of the Snake River across southern Idaho, from Stanfield, OR, to Opal, WY. No environmental analyses have been completed.

OREGON

Boardman, OR to Hemingway, ID Transmission Line (B2H) –This is a 300-mile transmission line proposed by Idaho Power. It will cross from Boardman, OR, to Hemingway, ID. There are several routes being analyzed, all of which will cross the Oregon Trail or one of its alternate routes in Baker, Malheur, or Grant counties in central-south Oregon. The

transmission line right-of-way will be on a combination of federal, state and private lands. Both BLM and USFS lands are involved.

Antelope Ridge Wind Farm – Horizon Wind Energy proposes developing a wind energy farm in the Baker City area. Cultural studies identified several locations where “intact segments” of the Oregon Trail are located in the turbine corridor. Some consultant documentation claims that direct impacts to these segments will be avoided (even on private land) but no viewshed studies have been done. The project still has to receive a permit from the Oregon Energy Facility Siting Council (OEFSC). Dave Welch is consulting on this project on behalf of OCTA.

Montague Wind Power Project– This is a large wind farm project that will be located just east of John Day river crossing, south of Arlington, OR. It straddles the Oregon Trail route. The wind farm will hook into an existing transmission line.

Welch provided additional information about the Oregon projects:

After a review of on-going wind farm projects, it was decided to concentrate on two projects that are still at phases where we might be able to influence their impact on the Oregon NHT. The projects are the Antelope Ridge Wind Farm and the Montague Wind Power Project. Both are on private land and the Oregon NHT passes through each.

Continued on Next Page



Issues...

Continued from Previous Page

For projects of this type, the key governmental agency is the Oregon Energy Facility Siting Council (OEFSC). They must issue a site permit. They have well-documented procedures and standards for doing this. Our efforts are focused on participating in this process with the goal of improving protection of the trails.

The notice of intent for Antelope Ridge has been published for this project and the formal application is being prepared. Direct contact with the developer (Horizon Wind) has been established. They provided a draft copy of their application for review. Comments were provided by OCTA. We are encouraging them to provide protection of the trail route and setting and to provide substantial mitigation for the adverse impacts to the setting. I am also working with a local landowner who owns property in the project area and is opposed to the project. Please note that OEFSC cannot deny a permit based upon impacts to cultural resources like the trail, but they can set conditions. I am also working with the BLM Baker City and NPS on this project.

Montague Wind Power Project is new. The notice of intent was published in November and it provides a great deal of information on the project. The project is south of Arlington, OR and straddles the Oregon Trail. Comments have been submitted to the Oregon Department of Energy.

Wyoming Trail Resources At Risk

By Dave Welch

Over the past few years we have been emphasizing the need for protection of the South Pass Landscape. This is an approximately 80-mile segment from Horse Creek north of Independence Rock to the Little Sandy Crossing. A key on-going action that will affect how this area is used is the BLM Lander Resource Management Plan (RMP) which is now being developed.

The main threat in this area is wind farms on the adjacent ridges. Coincidentally, there has been much concern about threats from all sources to the sage grouse throughout most of Wyoming. As I reported after my travels in Wyoming last summer, it appears possible that setting aside areas for the sage grouse may also protect the trails and their setting.

Wyoming Governor Dave Freudenthal has identified "core areas" for sage grouse protection and the BLM has published guidelines so this seems to be moving ahead quickly. The governor's actions are aimed had heading off a listing of the sage grouse as an endangered species since this would have wide impacts on use of public and private lands in Wyoming.

Lander Road/Pinedale Anticline Programmatic Agreement (PA). The current revision of this PA is nearing completion and may provide the highest level of mitigation for any energy development project in Wyoming impacting cultural resources. OCTA has been working

with the Sublette County Historical Society and the Alliance for Historic Wyoming to develop meaningful mitigation for the adverse impacts of gas well developments by Shell and Ultra and new transmission lines by Rocky Mountain Power. The mitigation package may exceed \$900,000. A land purchase along the New Fork River and various interpretive and educational projects are being considered. A recent development is a change in regulations that will require full exploitation of existing pads before new pads are constructed. While this seems like a good idea, it could result in the highly visible drill rigs being present for years rather than months.

Hiawatha Gas Field. -- It has been determined that this large gas field development south of Rock Springs will have an adverse impact on several historic roads and trails, including the Cherokee Trail. A mitigation package has been proposed, but it seems totally inadequate for the magnitude of this project. Jack and Pat Fletcher have been representing OCTA on this project along with Don Hartley.

PacifiCorp Rock Springs Road Transmission Line. -- Unauthorized blading adversely affected seven cultural properties including the South Pass NHL and the Emigrant Trail. The Rock Springs Field Office of BLM and Wyoming State Historic Preservation Office are considering

Continued on Next Page

Chimney Rock Purchase Initiative Needs Support

Editor's Note: This article is condensed from a longer piece that appeared in the Omaha World-Herald.

**By David Hendee
World-Herald News Service**

Chimney Rock, the sentinel that stirred thousands of pioneer emigrants during the days their wagons rolled past, would continue to be protected under a new Nebraska State Historical Society initiative.

The society hopes to raise \$1.2 million by the end of summer to purchase 551.7 acres of land at the base of the geological formation to ensure its protection from potential residential or commercial development.

"We've got a steep climb," said Michael Smith, historical society director.

There are no immediate threats to the monument, but development trends in the West concern historians and conservation organizations interested in preserving the big-sky setting of Nebraska's most recognizable natural landmark.

Smith said the society's goal is to perpetuate the visual landscape at Chimney Rock which towers 325 feet above the prairie along the North Platte River, much as it appeared in the mid-1800s.

"We want to make sure we don't have a motel spring up or someone subdivide the site as Chimney Rock Acres with a bunch of hobby farms, ranchettes or houses with little red barns out back," he said.

The Nebraska Environmental Trust has contributed \$300,000 toward the purchase price, but another \$900,000 must be raised.

The land for sale near Chimney Rock is owned by Gordon and Patty Howard of Bayard. The Howards operated the Oregon Trail Wagon Train cookout and living history business in the shadow of the landmark for nearly three decades. They want the historical society to acquire the parcel to guarantee its preservation.

The Howards bought the parcel about 20 years ago from an owner who hoped to develop the site for housing, said 76-year-old Gordon Howard.

"We bought it to preserve it," he said. "This is sacred ground to the expansion of the country."

Chimney Rock gained national recognition four years ago when it was featured on Nebraska's state quarter in tribute to the state's role in westward migration.

The state already owns 80 acres that forms the Chimney Rock National Historic Site and eight acres at a nearby visitor center. The parcel the historical society wants to buy would provide a square-mile prairie grass buffer at the site.

Loren Pospisil, supervisor of the historic site, said many of Nebraska's scenic wonders have been well-protected for years by private landowners like the Howards.

OCTA has helped with the effort to purchase the land by contacting the Colorado office of the Conservation Fund for help.

The Conservation Fund helps facilitate purchases of such sites and has a purchase agreement with the Howards. When the sale is finalized, the land will be conveyed to the state.

Wyoming Trail Resources

Continued from Previous Page

development of a memorandum of agreement to mitigate the adverse effects.

Dickie Springs Gold Mine. -- The original memorandum of agreement (MOA) for this site near South Pass expired last September and no new onsite activities are proposed. However Fremont Gold would like to develop a new MOA. It is reported that the restoration work done at the field sites after sampling a couple of

years ago is very good.

Gateway West Transmission Line -- This new transmission line extends from near Rawlins, WY to Boise, ID. We have been working with the BLM Kemmerer Field Office to identify a routing with the least impact on the trails. A route just north of Kemmerer that would have impacted high-quality segments of the Sublette Cutoff seems to have been avoided, but no final decisions have been made.

White Mountain Wind Farm -- This is a large wind farm proposed for the bluff northwest of Rock Springs, WY, which will have adverse impacts on the setting of the Cherokee Trail and possibly the main emigrant trail in the Farson area. The Ute Tribe has raised questions about the impact of this project on areas important to the tribe. OCTA has also requested consideration of the impact of the turbines from the main emigrant trails.



Awards Nominations Being Accepted

It is time to begin the nomination process for the OCTA Awards to be presented at the August convention in Elko, NV.

To make a nomination, please complete the award form, which is published on the OCTA Web site in the "Members Only" section. If possible, complete the form and e-mail it to the Awards Committee by sending it to the new Awards Committee Chairman Dick Nelson, at <KCNelson@sbcglobal.net>.

If you do not have access to the Internet and need a form, contact OCTA Headquarters at 888-811-6282. The deadline for nominations is June 1.

The categories and the qualifications are as follows:

Gregory Franzwa Meritorious Achievement Award — the highest award OCTA can give to recognize long-term and significant

contributions to OCTA. Only members can qualify for Meritorious Achievement.

Elaine McNabney Distinguished Volunteer Award — bestowed on OCTA members who contribute significantly to achieving OCTA goals and projects. Only OCTA members can qualify for Distinguished Volunteer.

Distinguished Service Award — granted to organizations, businesses, government agencies, individuals, or others who contribute or participate in furthering OCTA's programs directly or provide substantial support in a non-affiliated way to trail preservation and education.

Friend of the Trail Award — presented to groups, individuals, or organizations that have direct ties to lands over which historic trails pass. Neither property ownership nor current residence on trail property

is required, but emphasis is placed on preservation of trail remnants, education of the public about their historic resources, and allowing responsible public access to the historic resources.

National Certificates of Appreciation — presented to individuals and organizations that have made a particular effort in achieving a short-term OCTA goal. These certificates are for efforts of national scope; appropriate chapters should recognize more regional or local efforts.

Young OCTAN Award — presented to young people between the ages of six and twenty-one who have demonstrated particular interest in OCTA and the history and/or preservation of historic emigrant trails. The nominee will have demonstrated this interest by an activity in the field or via a school or class project in such a manner that is considered outstanding and far above the typical field or school project. The project may also be an outstanding personal endeavor undertaken on the nominee's own initiative. An entire class or group of school-aged children may be nominated as one aggregated nominee. Qualifying standards would include participation in OCTA meetings, outings, and/or work projects over an extended period. OCTA membership is not a requirement.

David Welch Preservation Award — given to an OCTA member who has provided significant contributions in the area of trails preservation over a period of years. The award recipient is determined by the OCTA Board based upon nominations from chapters and members. This award is not necessarily given every year.

NEWS FROM

TRAILS HEAD

Chapter to Host OCTA in 2012

By Pat Traffas
Chapter President

Trails Head Chapter helped to host the Mid-year Board meeting just concluded in Independence. At that meeting, we were approved as the host chapter for the 2012 OCTA annual convention.

A steering committee, led by Ross Marshall, has already been meeting to do some preliminary planning. The first order of business will be to select a convention hotel and when that process is completed later this year we will know the specific suburban city location.

Our next membership meeting will be held at the historic 1857 Grinter

House in Kansas City, KS, on April 10. Site Director Joe Bretano will be the speaker. A branch to and from Fort Leavenworth, that was part of the Santa Fe-Oregon-California Trail, went through this ferry site location on the Kansas River.

We have begun planning to host Trails Head Chapter's "Rendezvous 3" on National Trails Day, which occurs this year on Saturday, June 5. First begun in 2006, it will be our third hosting of this well-attended biennial event at the Lone Elm Campground Park in Olathe, KS. We will be inviting leaders from all trails and historical groups in the area as we continue to promote the idea of partnering for all projects.

Kay Threlkeld Retires from NPS

At the end of February, world travel beckoned Kay Threlkeld as she finished her career with the National Trails System office of the National Park Service.

Threlkeld began her career at Gulf Islands as a seasonal interpreter and worked in the field of interpretation at Tonto National Forest, Fort Laramie National Historic Site, Zion National Park, and Jefferson National Expansion Memorial in St. Louis. Along the way, she was recognized for her interpretive programs and tours, and participation in living

history programs at Fort Laramie.

In 1994, she joined the staff of the Rocky Mountain Region Long Distance Trails staff and became the first employee of the office in Salt Lake City. Engaged in many different aspects of trail administration there, Kay developed strong partnerships with groups supporting the Oregon, California, Mormon Pioneer, and Pony Express Trails.

For several years she had key responsibilities for interpretation of those historic trails from the Mississippi and Missouri River

valleys to the western end of the trails. More and more she engaged in developing the database for the four trails using GPS and GIS technology, Kay served as the key member for historic trails on an interagency task force that developed the outline and content of an inventory of trail resources.

Threlkeld's contributions have been substantial to the national trails system, and in particular the historic trails. Following a year of travel she expects to resume activities in support of OCTA.

Annual Fund Drive Supports OCTA Mission

Once again our members demonstrate their dedication and commitment to the emigrant trails by contributing to our Annual Fund Drive. Results so far include \$4,518 for the General Fund; Preservation, \$2,980; Loomis Endowment Fund, \$500; Education, \$805; and Heritage Endowment Fund, \$230.

The Total as of February 18, 2010 was \$9,033.

Help us reach our goal this year of \$20,000.

Contributors through February 18 include:

LaVon Allen
Norman J Barker
Thomas & Dee Birch
Judy Brown
Gail & Muriel Carbiener
Don Clark
Karen Corder
Howard Cramer
Connie Crump
Lee Drickamer
Elmer & Betty Eberhardt
Raymond & Maura Egan
Frank & Jackie Ellis
Thomas Fee
John Flasch
Stephenie Flora
Craig Fuller

Charlotte Glinski
Adele Godwin
Curtis & Nancy Grant
Paul Grunland
Carol Guthrie
Glenn & Carol Harrison
Scott Hendricks
James Herring
Cheryl & Gil Hoffman
Robert & Hedy Jones
Leon & Judith Jones
Kent Kemmerling
Garth Kendig
Polly N Kennison
Robert & Gail King
Katherine Kirkland
William Knight
Lyle Lambert
John Mark Lambertson
Ormie Lamson
Robert Lingner
Patricia Loomis
Brenda Lozier
Ed Lynch
Ross & Shirley Marshall
Helen Martin
Barbara & Marilyn Maxwell
Jeanne McGuire
Howard & Bonnie Miller
Al & Laura Mulder
Dick & Ruby Nelson
Alma O'Hare
Mary Olch
James T. Owen

M. Lethene Parks
Judson Parsons & Diana Gardener
Paul & Vicki Peters
Henry & Glenna Pittock
Brooks Ragen
Mary Rawlings
Louis N Ritten
Jeanette Roberts
Bill & Gail Robinson
Louise Hammer
Joe Rowan
Tom & Carolyn Russell
Richard Schmidt
John & Pat Schwartz
Robert & Alice Shellenberger
Marley & Gary Shurtleff
Zeke Sicotte
Ariane Smith
Bill Speiden
Alan Stockland
Allen & Jean Stultz
Patrick Surrena
David & Sharon Taylor
Thomas & Diane Tefft
James M Tompkins
Richard & Shirley Trevallee
Harold & Marge Waitman
William Weaver
Louis Weiser
Gary Werner
Joseph Whitehorne
Kirke Wilson
Gareth & DeAnn Wilson



Additional Route Study Work Continues

By Jere L. Krakow

As coordinator for OCTA on the Additional Routes Study passed by Congress last March, I want to give you an update on work that I have been doing since October 2009. My job is to assist OCTA chapters and members to provide information and expertise to the staff of the National Trails Intermountain Region (NTIR) of the National Park Service to prepare the feasibility study/environmental assessment, and to submit recommendations to Congress. After that, next steps in the process will be enacting legislation to amend the National Trails System Act to include additional routes of the Oregon, California, Mormon Pioneer, and Pony Express National Historic Trails.

Several OCTA members have been in communication with me about their interest in mapping the study routes named in the 2009 legislation, identification of high potential sites and segments, and events scheduled this year related to a particular route. Earlier in February, I spent a week in the NTIR offices at Salt Lake City meeting with key staff going through document and map files for the routes

to be included in the study. Along with several NTIR staff including Susan Boyle, Lee Kreutzer, and John Cannella, I met with Kay Threlkeld, who retired at the end of February, and who developed the existing trail database. She, with assistance from many of you, has also contributed significant amounts of mapping and documents to this exhaustive compilation of trail information.

It became apparent during this meeting that a historic documentation report completed in 2004 for the NTIR office by Evans and Hatch on the additional routes Congress identified in 2009 is an excellent source of information for most of these routes. However, members of the NTIR staff and I have identified gaps in the existing information prepared by Evans and Hatch. In the very near future, steps will be taken to coordinate with OCTA members about the appropriate methodology, to determine the sources to examine, and to collect and analyze the information necessary to fill in these gaps.

In addition at this meeting, the NTIR staff and I concluded that most routes are already suitably mapped and digitized and available at 1:100,000 scale and are ready for use. Some

unmapped routes exist, however, and I will follow up with key members of OCTA and other trail associations to discuss the still outstanding mapping needs. With advances in technology, OCTA Mapping Chair Dave Welch and John Cannella, GIS specialist of NTIR, believe much mapping can be completed using electronic base maps of easy access and downloading data that may be directly accessed by the NTIR staff. This will substantially streamline mapping and expedite the completion of the Feasibility Study.

I anticipate that during the coming summer and extending into 2011, some travel will be scheduled in coordination with OCTA members along many of the routes in the study. This will enable evaluation of sites and segments that evoke a sense of being on the trail during the period of historical significance. Such important resources are a key part of the criterion in the National Trails System Act that enables visitors to experience a sense of the past at a particular site or along a particular segment.

Periodically I will provide updates about the study in *NFP* and on the OCTA Web site. I will also do updates at meetings of the OCTA Board. If you wish to contact me about the study and my role, or have key information about the routes, please contact me at my e-mail address of <jlkrakow@msn.com> or by telephone at 505-828-0309.

NEWS FROM

KANZA

Indian, Pony Express Programs Set

The KANZA Chapter has announced several programs that may be of interest to OCTA members. The Hollenberg Pony Express Station has a program on April 11, the anniversary of the KANZA chapter, and there will be another program at the station on July 11, to give an overview of the Pony Express in connection with the 150th anniversary of that service.

On May 9 a program "Remember the Past, Voices from Pawnee Elders" will take place at the Pawnee Indian Museum.

Fred Six will present, "Blanton's Crossing on the Wakarusa, N. B. Blanton, the Oregon Trail and More" at the Watkins Historical Museum in Lawrence, KS, on June 13.

Visit the OCTA Store

For books and other

Trail items

www.octa-trails.org

OCTA Film Wins Oregon Heritage Award

Candy Moulton Wins Spur Award



Film participants Brian Larson, left, and Dave Vixie, center, visit with OCTA Association Manager Travis Boley at the IFFF in Hollywood. John Krizek, OCTA PR/Marketing Chair, also attended the festival. (Photo by Candy Moulton)

OCTA will receive the Oregon Heritage Excellence Award for *In Pursuit of a Dream*, “for its exemplary way of sharing immersive experiential learning about Oregon history,” the award notice said.

The Heritage Excellence Awards recognize individuals, businesses and organizations for outstanding efforts on behalf of Oregon heritage. They honor those people and organizations who have made the most of available resources and skills.

The Heritage Programs Division of the Oregon Parks and Recreation Department, which houses the Oregon Heritage Commission and the State Historic Preservation Office, is giving the awards. The award will be presented at the Heritage Excellence Awards reception and dinner at 6 p.m. on Friday, April 9, at the Oregon Regional Heritage Roundup in Oregon City. Oregon First Lady

Mary Oberst and Oregon Heritage Commission chair George Kramer will make the presentation.

OCTA Past President Glenn Harrison of Albany, OR, and OCTA Secretary Lethene Parks of Vancouver, WA, will accept the award on behalf of OCTA.

The award notice concluded by saying that “the efforts of organizations and

people like you are essential for the strength of Oregon’s cultural heritage. I commend and congratulate you for your outstanding work.”

Candy Moulton has won the Spur Award for Best Documentary script from Western Writers of America. The Spur award will be presented at the annual WWA convention, June 26, in Knoxville, TN. This is her second Spur, she previously won for a biography of Chief Joseph.

In Pursuit of a Dream was a Finalist for Best Documentary at the International Family Film Festival in Hollywood, CA, in March.

It has been selected as one of 25 feature films to show at the Boston International Film Festival in April. There were 2,500 films submitted for this festival with 25 features and 75 short films selected. The *IPD* showing will be at 4:30 p.m., April 19 at the Loew'sAMC Theater on the Boston Common.

KidsFirst! Film Festival in Santa Fe, NM, also has selected *In Pursuit of a Dream* for its 2010 programming.

The film, produced for OCTA by Boston Productions, also will have public showings in Oregon City on April 10; Paradise, CA, on April 1; Loveland, CO, on April 23; Vancouver, WA, on July 4; and Montpelier, ID, July 23 and 24.



Film producers Candy Moulton, left, and Quackgrass Sally attended the International Family Film Festival in Hollywood.

Bookmark our Site: www.octa-trails.org

Quick and easy links to trail facts, people and places, resources, events, and more.



OREGON-CALIFORNIA TRAILS ASSOCIATION

STATEMENT OF FINANCIAL POSITION

SEPTEMBER 30, 2009

Assets

| | | |
|---|--|-------------------------|
| Cash and Cash Equivalents: | | |
| General Operating Accounts | | 9,772 |
| Restricted Accounts | | 53,627 |
| Accounts Receivable | | 34,870 |
| Inventory (at cost) | | 42,029 |
| Investments (Endowment Funds) | | 841,967 |
| Intangible Asset-Film (Production in Progress) | | 296,804 |
| Furniture and Equipment-Cost \$43,337 less \$35,167 Accumulated Depreciation | | <u>8,170</u> |
| Total Assets | | <u><u>1,287,239</u></u> |

Liabilities

| | | |
|----------------------------------|---------------|--------|
| Accounts Payable | 30,364 | |
| Payroll Taxes and Other Payables | 2,641 | |
| Deferred Revenue | <u>18,376</u> | |
| Total Liabilities | | 51,381 |

Net Assets

| | | | |
|---|---------------|----------------|-------------------------|
| Unrestricted: | | | |
| Designated by Governing Board | 309,707 | | |
| Represented by Film and Furniture & Equipment | 304,974 | | |
| General | <u>56,166</u> | 670,847 | |
| Temporarily Restricted | | 181,607 | |
| Permanently Restricted | | <u>383,404</u> | |
| Total Net assets | | | <u>1,235,858</u> |
| Total Liabilities and Net Assets | | | <u><u>1,287,239</u></u> |

OREGON-CALIFORNIA TRAILS ASSOCIATION
STATEMENT OF FINANCIAL ACTIVITIES
FOR THE YEAR ENDED SEPTEMBER 30, 2009

| | <u>General Operations</u> | <u>Film Project</u> | <u>Endowment Funds</u> | <u>Total</u> |
|---|-------------------------------|-------------------------|----------------------------|----------------|
| Revenues | | | | |
| National Park Service Grants | 142,308 | 25,500 | | 167,808 |
| Membership Dues | 75,835 | | | 75,835 |
| Convention Revenue, Net of Expense | 23,635 | | | 23,635 |
| Symposium Revenue, Net of Expense | 6,625 | | | 6,625 |
| Contributions | 22,347 | | 4,929 | 27,276 |
| Life Memberships | | | 2,133 | 2,133 |
| Book and Mdse. Sales, Net of Costs | 19,821 | | | 19,821 |
| Net Investment Income and Gains | | 2,135 | 9,700 | 11,835 |
| Other Income | 9,804 | 7,130 | | 16,934 |
| | <u>300,375</u> | <u>34,765</u> | <u>16,762</u> | <u>351,902</u> |
| Distribution from Endowments to Operations | 10,000 | | (10,000) | - |
| Total Revenues | <u>310,375</u> | <u>34,765</u> | <u>6,762</u> | <u>351,902</u> |
| Expenses | | | | |
| Board and Officers | 10,374 | | | 10,374 |
| Preservation, Education and Other Committees | 32,516 | | | 32,516 |
| Cooperative Agreement Salary and Expenses | 82,480 | | | 82,480 |
| General and Administrative | 84,923 | | | 84,923 |
| Publications | 55,348 | | | 55,348 |
| CCSP Projects | 32,803 | | | 32,803 |
| Meetings | 7,483 | | | 7,483 |
| Books and Mdse. Promotion | 4,446 | | | 4,446 |
| Film | | 101,085 | | 101,085 |
| Less Portion of Film Expenses Added to Assets | | (92,680) | | -92680 |
| Total Expenses | <u>310,373</u> | <u>8,405</u> | <u>-</u> | <u>318,778</u> |
| Revenues Over Expenses | <u>2</u> | <u>26,360</u> | <u>6,762</u> | <u>33,124</u> |

Greetings from the new Treasurer. WOW, so little time and so much to accomplish.

The OCTA operations basically broke even, with revenues exceeding expenses by \$2. Budget projections for the year indicated expenses would exceed revenue by \$21,000 so the actual results were much better than estimated.

Note, that in spite of the economy the value of our endowment funds increased by \$9,700 for the year ended 9-30-2009.

Marvin Burke
Treasurer





Oregon-California Trails Association
P.O. Box 1019
Independence, MO 64051-0519

Nonprofit Org.
U.S. Postage
PAID
Indep. MO
Permit No. 244

Inside

| | |
|-----------------------|----|
| Elko Convention..... | 3 |
| Preservation..... | 10 |
| Chimney Rock..... | 13 |
| Film Awards..... | 17 |
| Financial Report..... | 18 |

In Pursuit of a Dream

www.inpursuitofadream.org

Upcoming Showings:

April 10 - Oregon City, OR
April 11 - Paradise, CA
April 23 - Loveland, CO
July 4 - Vancouver, WA
July 23 & 24 - Montpelier, ID



opi
imagine. what we do.